

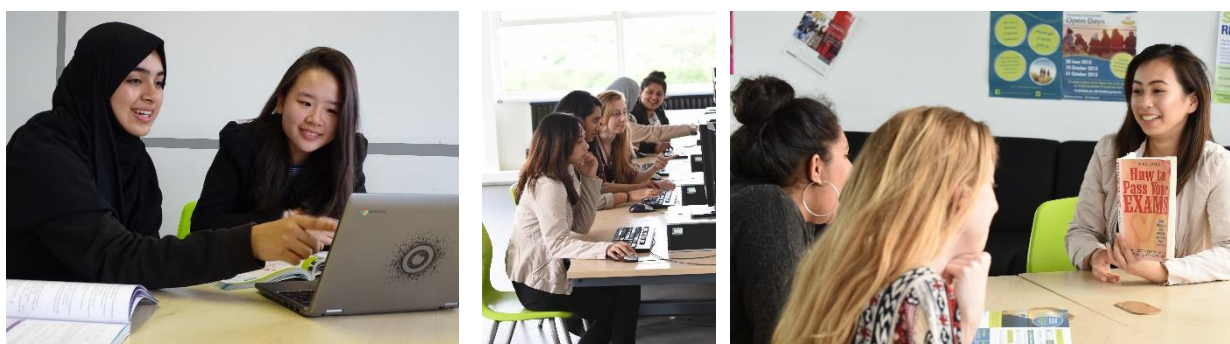


# Hillcrest Sixth Form Prospectus September 2021 Entry



# Contents

Welcome message	Page 3
Subjects overview and entrance requirements	Page 4
Application process	Page 5
Subject content, skills and assessment	Pages 6-10
Enrichment	Page 11



# Welcome

Thank you for your interest in Hillcrest Sixth Form.

Our Sixth Form Centre is co-educational and inclusive. We offer a number of both academic and Level 3 vocational courses with a range of pathways, which are taught by teachers who have expertise in their subjects.

Student performance at Hillcrest Sixth Form is excellent and we were pleased with our 2019 results, with value added in all subjects and 56% of grades at A\*-B; our progress score, which compares our students with those who have similar GCSE results, was “well above average.” In 2020, we maintained our strong results, with half of our students gaining all A\*-B grades; for the ninth consecutive year we achieved a 100% pass rate at A Level.

We offer a supportive and caring environment and provide high-quality teaching and learning. A system is in place to ensure that pastoral advice and guidance is always at hand to support students throughout their time in the Sixth Form.

Students are provided with the opportunity to gain additional qualifications through the Enrichment Programme. The EPQ is available for students in both Year 12 and Year 13 to complete over one or two years. During enrichment, students are taken step by step through their university application and receive advice and guidance from a range of visiting speakers from higher education, apprenticeships, employers and training providers.

The excellent results that our students achieve have allowed recent Year 13 leavers to gain places at a range of universities, including Russell Group, on a wide range of degree programmes including law, biomedical science and politics.



**MS J-A DAVIES  
HEADTEACHER**



**MISS A. MUNCEY  
HEAD OF SIXTH FORM**

# Subjects and entrance requirements overview

Subject and qualification:		GCSE entrance criteria			More info, including subject content and assessment:
		English Language	Maths	Other subject(s)	
Biology	A Level	6	6	66 Science or 6 Biology	Page 7
Chemistry	A Level	6	6	66 Science or 6 Chemistry	Page 7
Criminology	Diploma	4	4	N/A	Page 10
Drama and Theatre	A Level	5	4	6 Drama (if taken)	Page 10
English Literature	A Level	6	4	6 English Literature	Page 6
French	A Level	6	4	6 French	Page 6
Geography	A Level	6	5	6 Geography	Page 8
Government and Politics	A Level	6	4	N/A	Page 9
History	A Level	6	4	6 History	Page 8
Mathematics	A Level	6	7	N/A	Page 6
Philosophy and Ethics	A Level	6	4	6 Philosophy and Ethics	Page 8
Physics	A Level	6	7	66 Science or 6 Physics	Page 7
Psychology	A Level	6	5	6 Psychology (if taken)	Page 9
Science (Applied)	BTEC Extended Diploma	4	4	55 Science	Page 10
Sociology	A Level	6	4	N/A	Page 9

If you wish to study a subject that is not listed, please speak to or email Miss Muncey ([amuncey@hillcrest.bham.sch.uk](mailto:amuncey@hillcrest.bham.sch.uk)) – we may still be able to offer it through the Oaks Partnership.

All applicants should have pass grades in English Language and Mathematics GCSE. Depending on subject choices, it may be possible for you to resit one but not both of these. For A Level courses, all applicants should achieve at least four GCSEs at grade 6+. Please be aware that occasionally courses do not run because we fall below expected numbers at enrolment.

# The application process

[www.hillcrest.bham.sch.uk/  
sixth-form-applications](http://www.hillcrest.bham.sch.uk/sixth-form-applications)



## Make your choices

Read the prospectus

Discuss with family, subject teachers and/or careers advisor

Check that your subject choices will allow you to apply for your chosen university course or apprenticeship

## Open evening

Watch the video on the school website – use the link above.

Sign up for the live event on Microsoft Teams on Thursday 26<sup>th</sup> November

## Make an application online

Use the link above.

Deadline 18<sup>th</sup> December\*

Interviews and offers: January and February

Places confirmed: GCSE Results Day, August

Year 12 starts: September 2021

If you miss the application deadline, it may still be possible to apply. Get in touch to ask about this or any other questions: [amuncey@hillcrest.bham.sch.uk](mailto:amuncey@hillcrest.bham.sch.uk)

# English, Mathematics and Languages A Levels



## ENGLISH LITERATURE

Key contact: Mrs Drury [rdrury@hillcrest.bham.sch.uk](mailto:rdrury@hillcrest.bham.sch.uk)

Examination board: Eduqas



**You will study** poetry from a range of different times with more advanced analysis and evaluation; the changing traditions of drama over time; analysis of unseen prose and poetry texts and a coursework essay comparing two texts, one pre-2000 and one post-2000.

**You will develop skills in** communication, reflection and emotional intelligence; extended formal essay-writing; critical analysis and research skills; working with others.

**You could go on to** study a range of courses at university, including English language and/or literature, sociology, politics, law or journalism.

### Assessment:

Three examinations of two hours each at the end of Year 13, plus a coursework essay (20% of the qualification).



## MATHEMATICS

Key contact: Mrs Kanona [rkanona@hillcrest.bham.sch.uk](mailto:rkanona@hillcrest.bham.sch.uk)

Examination board: Edexcel



**You will study** pure mathematics (e.g. proof, algebra and functions, coordinate geometry, sequences and series, trigonometry) and applied mathematics (statistics – sampling, data presentation and interpretation, probability – and mechanics – quantities and units, kinematics, forces and Newton's laws).

**You will develop skills in** problem-solving, logic and analysing situations.

**You could go on to** study a range of courses at university, including Mathematics, Engineering, Medicine, Business, and Sciences, or apprenticeships in, for example, engineering.

### Assessment:

You will be assessed in three examinations at the end of Year 13, each lasting two hours.

*If you are interested in studying Further Maths, please contact Mrs Kanona.*



## FRENCH

Key contact: Ms Cooper [acooper@hillcrest.bham.sch.uk](mailto:acooper@hillcrest.bham.sch.uk)

Examination board: Edexcel



**You will study** social issues and trends, diversity and difference (including migration and integration, cultural identity and marginalisation, cultural enrichment, discrimination and diversity), and political, intellectual and artistic culture (contemporary youth culture, France 1940-1950, literature and film, and a personal research topic).

**You will develop skills in** critical and analytical thinking, effective and articulate communication, presentation and research skills, an understanding of a range of cultural influences, autonomy, resourcefulness, creativity and independence.

**You could go on to** study a range of courses at university, including Languages, Law, Business, Journalism, Education or Humanities, or apprenticeships in, for example, events management.

### Assessment:

You will undertake a speaking assessment (21-23 minutes), plus two examinations at the end of Year 13 – listening, reading and translation (2h30m) and critical and analytical response in writing (2h).

# Science A Levels



## BIOLOGY

Key contact: Mrs Johnson [mjohnson@hillcrest.bham.sch.uk](mailto:mjohnson@hillcrest.bham.sch.uk)



**You will study:** biological molecules, cells; organisms exchange substances with their environment; energy transfers between organisms; organisms respond to changes in their internal and external environments; genetics, populations, evolutions and ecosystems; and the control of gene expression.

**You will develop skills in** communication, problem solving, data collection and evaluation, independent research and practical science skills.

**You could go on to** study a range of degrees, including biology, medicine, biochemistry or pharmacology, or apprenticeships in various scientific and medical fields.

**Assessment:**

Paper 1 – 2 hours – 35% of A Level  
Paper 2 – 2 hours – 35% of A Level  
Paper 3 – 2 hours – 30% of A Level



## CHEMISTRY

Key contact: Mrs Kaur [rkaur@hillcrest.bham.sch.uk](mailto:rkaur@hillcrest.bham.sch.uk)



**You will study** physical chemistry (e.g. atomic structure, bonding, kinetics), inorganic chemistry (e.g. periodicity, halogens, transition metals) and organic chemistry (e.g. amines, polymers, amino acids and chromatography).

**You will develop skills in** communication, problem solving, data analysis and mathematical manipulations, and scientific practical skills.

**You could go on to** study a range of courses at university, including chemistry, medicine or pharmacy, or apprenticeships, for example in chemical engineering.

**Assessment:**

Paper 1 – 2 hours – 35% of A Level  
Paper 2 – 2 hours – 35% of A Level  
Paper 3 – 2 hours – 30% of A Level



## PHYSICS

Key contact: Mr Squires [tsquires@hillcrest.bham.sch.uk](mailto:tsquires@hillcrest.bham.sch.uk)



**You will study:** measurements, particles and radiation, waves, mechanics and materials, electricity, further mechanics and thermal physics, fields and their consequences and nuclear physics.

**You will develop skills in** analysis, manipulating mathematical operations, communication, practical scientific skills.

**You could go on to** study a range of degrees, including physics, engineering and mathematics, or apprenticeships in, for example, engineering.

**Assessment:**

Paper 1 – 2 hours – 34% of A Level  
Paper 2 – 2 hours – 34% of A Level  
Paper 3 – 2 hours – 32% of A Level

# Humanities A Levels



## HISTORY

Key contact: Miss Guyver [aguyver@hillcrest.bham.sch.uk](mailto:aguyver@hillcrest.bham.sch.uk)

Examination board: AQA



**You will study** Tsarist and Communist Russia (1855-1964), The Making of Modern Britain (1951-2007) and a Historical Investigation, which will be a free choice about any area of pre-1800 history you are interested in.

**You will develop skills in** critical analysis, research, judgement of primary sources and interpretations, extended writing and verbal communication.

**You could go on to** study a range of courses at university, including politics, history and law, or apprenticeships in, for example, law or HR.

**Assessment:**

You will be assessed in two examinations of two and a half hours each at the end of Year 13, plus an extended coursework essay – 20% of your grade



## GEOGRAPHY

Key contact: Mr Gregory [lgregory@hillcrest.bham.sch.uk](mailto:lgregory@hillcrest.bham.sch.uk)

Examination board: Edexcel



**You will study** tectonics, diverse places, globalisation, water, the carbon cycle and energy security, superpowers, and health, human rights and intervention.

**You will develop skills in** communication, organisation, statistical analysis, problem solving, independent investigation and essay-writing.

**You could go on to** study a range of courses at university, including geography, geology, business, sociology, or biology, and apprenticeships in, for example, conservation.

**Assessment:**

Three examinations at the end of Year 13, each of 2 hours 15 minutes, plus a coursework module.



## PHILOSOPHY & ETHICS

Key contact: Mrs Abbotts [jabbotts@hillcrest.bham.sch.uk](mailto:jabbotts@hillcrest.bham.sch.uk)

Examination board: Eduqas



**You will study** the philosophy of religion (arguments for the existence of God, challenges to religious belief, religious experience and religious language); Islam (religious figures, texts, concepts, life, practices and identity, and significant social and historical developments in religious thought); religion and ethics (ethical thought, deontological ethics, teleological ethics, free will and determinism).

**You will develop skills in** communication, problem solving, working collaboratively, ICT and reflection.

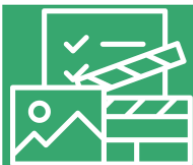
**You could go on to** study a range of courses at university, including Theology, Law, English, Journalism or Philosophy, or apprenticeships in, for example, coaching.

**Assessment:**

You will be assessed in three examinations of two hours each at the end of Year 13.



# Social and Political Sciences A Levels



## SOCIOLOGY

Key contact: Mrs Hubble [ahubble@hillcrest.bham.sch.uk](mailto:ahubble@hillcrest.bham.sch.uk)

Examination board: Eduqas



### You will study:

Socialisation and culture (cultural transmission; families and households; education); Methods of sociological enquiry (designing, justifying and evaluating a piece of sociological research); power and stratification (crime and deviance).

**You will develop skills in** critical and reflective thinking, an awareness of social structure, analysis,

**You could go on to** study a range of courses at university, including Sociology, Politics, Social Policy, Media Studies or Journalism, or apprenticeships in, for example, business administration.

### Assessment:

You will be assessed in three examinations, one for each component, at the end of Year 13.



## PSYCHOLOGY

Key contact: Mrs Hubble [ahubble@hillcrest.bham.sch.uk](mailto:ahubble@hillcrest.bham.sch.uk)

Examination board: Eduqas



**You will study** psychology past and present (five psychological approaches, therapies and classic pieces of research); investigating behaviour (principles of research, personal investigations and the application of research methods); and implications in the real world (applications and controversies).

**You will develop skills in** critical thinking, evaluation, practical research skills, communication, group working, problem solving, interpreting information and designing research.

**You could go on to** study a range of courses at university, including Psychology, Business or Criminology, or apprenticeships in for example chartered management.

### Assessment:

You will be assessed in three examinations at the end of Year 13.



## GOVERNMENT AND POLITICS

Key contact: Miss Muncey [amuncey@hillcrest.bham.sch.uk](mailto:amuncey@hillcrest.bham.sch.uk)

Examination board: AQA



**You will study** the governmental structures of the UK, the politics of the UK, governmental structures of the USA, politics of the USA, comparative politics, and political ideas.

**You will develop skills in** research, written and verbal communication, construction of argument, debate, analysis, synthesis and extended writing.

**You could go on to** study a range of courses at university, including Politics, Law, International Relations or Social Policy, or apprenticeships in, for example, public services.

### Assessment:

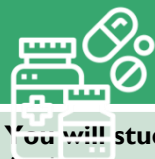
You will be assessed in three examinations at the end of Year 13.

# Applied and creative subjects

## APPLIED SCIENCE BTEC

Key contact: Mrs Johnson [mjohnson@hillcrest.bham.sch.uk](mailto:mjohnson@hillcrest.bham.sch.uk)

Examination board: Pearson



**You will study:** Principles and Applications of Science, Practical Scientific Procedures and Techniques, Science Investigation Skills, Investigation Procedures in Practice, Contemporary Issues in Science and an extended diploma.

**You will develop skills in** research, employability skills, confidence in applying your knowledge, practical scientific skills and independent learning.

**You could go on to** a wide range of degree and apprenticeship options in the scientific and medical field, including nursing, pharmacy, audiology, midwifery and biomedical science.

**Assessment:** A mixture of assignments, set and marked by your teachers using the pass-merit-distinction criteria, and exams, set and marked externally by Pearson

BTEC Applied Science Extended Diploma is equivalent to three A Levels. Almost all students who study this subject study it as their only subject and many universities accept it as the only qualification

## CRIMINOLOGY DIPLOMA

Key contact: Miss Muncey [amunce@hillcrest.bham.sch.uk](mailto:amunce@hillcrest.bham.sch.uk)

Examination board: WJEC



**You will study** changing awareness of crime, why certain crimes are not reported, criminological theories, the process of criminal investigations and prosecutions, theories of crime and punishment.

**You will develop skills in** communication, problem solving, data analysis and mathematical manipulations, and scientific practical skills.

**You could go on to** study a range of courses at university, including law, criminology and sociology, or to work in a wide range of criminal justice careers.

**Assessment:** You will take two controlled assessments, one in Y12 and one in Y13, and sit a one-and-a-half hour examination at the end of each year.

Criminology is a Level 3 Diploma: it is equivalent to one A Level and is accepted as such by most universities; if you choose Criminology, it should be alongside two A Levels subjects.

## DRAMA AND THEATRE A LEVEL

Key contact: Mrs Taylor-Stuppel [ltaylor@hillcrest.bham.sch.uk](mailto:ltaylor@hillcrest.bham.sch.uk)

Examination board: AQA



**You will study:** Drama and Theatre, Creating Original Drama and Making Theatre. You will be able to gain skills in performance, analysis and grow in confidence and maturity.

**You will develop skills in** collaboration, analytical thinking, research, performance, evaluation, confidence, and appreciation of cultural and social contexts.

**You could go on to** a wide range of degrees including Theatre, Broadcasting, Drama Therapy or Law, or an apprenticeship in, for example, community arts administration or recording engineering.

**Assessment:** Drama and Theatre (40%): written examination at the end of Y13; Creating Original Drama (30%): devised performance and working notebook; Making Theatre (30%): performance and reflective report.

# Enrichment

In addition to the academic curriculum, all students are encouraged to get involve in enrichment opportunities. As universities demand more from students, it is increasingly important to show a wide range of skills and experiences.

Extended Project  
Qualification

Duke of  
Edinburgh Silver  
Award

The Brilliant Club

University  
Masterclasses

Subject Trips and  
Visits

Visiting Speakers

Careers Fairs and  
HE Open Events

Mentoring  
Programme

Sports Clubs

Life skills, e.g.  
personal finance

Apprenticeship  
Fair

Individual  
Guidance

Competitions, e.g.  
debating

University Access Programmes, e.g.  
Warwick Pathways to Law, Banking and  
Engineering; Doug Ellis Pathway to Healthcare



**Hillcrest School**  
Stonehouse Lane, Bartley Green, B32 3AE  
0121 464 3172