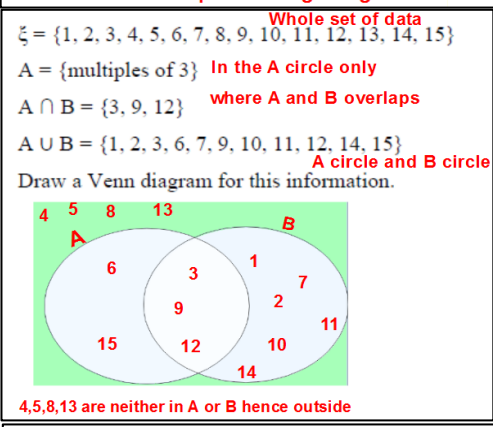
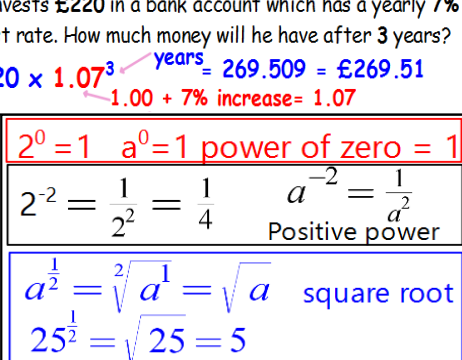
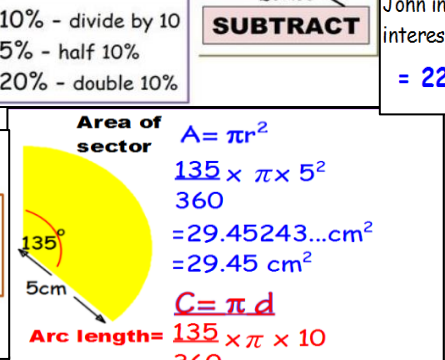
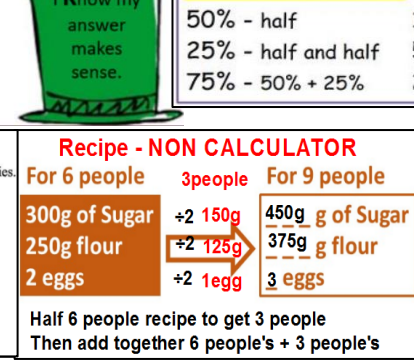
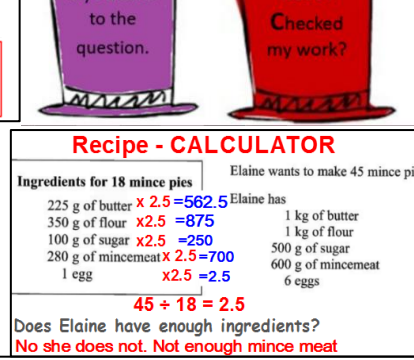
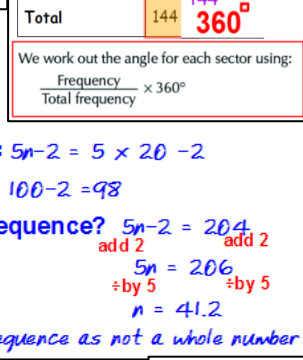
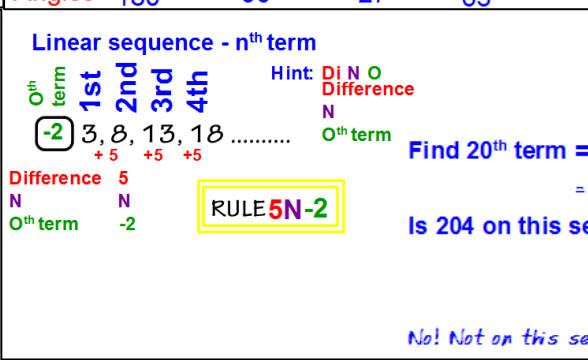
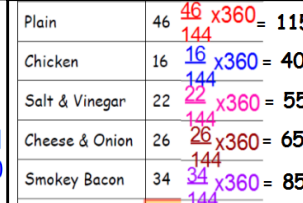
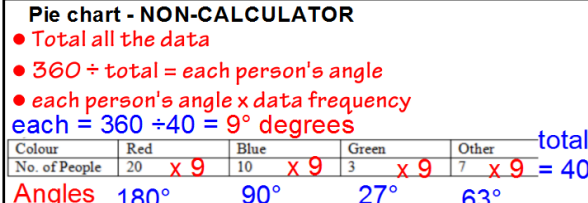


Craig goes on holiday to Hong Kong. In Hong Kong, he sees a camera costing HK\$3149.55. In London, an identical camera costs £280. The exchange rate is £1 = HK\$12.30. Craig buys the camera in Hong Kong. How much cheaper is the camera in Hong Kong than in London?

£1 = HK\$ 12.30
x280 = HK\$ 3444
£280 = HK\$ 3444
Cheaper in Hong Kong

or
x256.06 = HK\$ 3149.55
HK\$ 3149.55 = £256.06
Cheaper in Hong Kong

GCSE FOUNDATION 5-1



REVERSE PERCENTAGES
In a sale, normal prices are reduced by 15%. The sale price of a CD player is £204. Work out the normal price of the CD player.
 $100\% - 15\% = 85\%$
 $85\% = £204$
 $1\% = \frac{£204}{85} \times 100$
 $= £240$
Reverse % = $\frac{\text{new amount} \times 100}{\text{new \%}}$

