



# Promoting Positive Relationships and Supporting Behaviour Regulation Policy

**Date Policy updated:** July 2021

**Date Policy due to be reviewed:** July 2022

**Committee Responsible for Policy:** Full Governing Body Committee

## **Section 1 – Policy Statement**

This policy describes The Hillcrest School's approach to safeguarding and promoting positive behaviour in the best interest of all children attending the school.

In order to achieve our aims to maintain a happy, responsible and fair school respected by the community and to raise achievements for all, we need good behaviour and good discipline. High standards of behaviour and discipline are essential for securing an orderly learning environment and improving classroom learning and raising achievement

Our policy is based on 2 key principles:

1. Praise - leading to the issue of awards / rewards
2. Choice – instilling in the students a clear sense that they choose how to conduct themselves and that from these choices will come positive or negative consequences

Positive behaviour is an essential component of an effective teaching and learning environment. Hillcrest School is committed to the promotion of positive behaviour for all students and to supporting students to develop their social, emotional and behavioural skills, and overall welfare.

Hillcrest School has a holistic approach to education, valuing learning in and out of the classroom. We are an 'Attachment Aware' school which means we focus on building positive relationships between students and staff and students with their peers. We recognise that understanding our emotions is a key aspect of understanding and managing behaviour. Through 'Emotion Coaching' and being attachment aware, both students and adults are both able to manage their behaviour and create an environment that is conducive to learning. Ultimately, we wish to give our students' confidence about their capacity to self-manage/self-regulate their emotions and behaviour.

Hillcrest School is committed to the emotional mental health and well-being of our students, parent/carers and staff. We wish to work towards this in all aspects of school life, and to provide an ethos, environment and curriculum that supports the social, emotional and mental health of the whole school community. We treat all students with unconditional respect and have high expectations for both adults' and children's learning and social behaviours. We understand that negative behaviour can signal a need for support which we will provide for individual students without diluting our expectations.

This policy is for all staff, students, parents/carers, governors, visitors and partner agencies working within the school and provides guidelines and procedures as to how our school supports and responds to behaviour. The promotion of self-discipline and respect for others also guides the school's actions to promote positive behaviour and informs the school's response to any kind of peer-on-peer abuse, bullying, intimidation or harassment, both offline and online.

The 'Getting It Right' policy fundamentally underpins and drives the ethos of the school. Students are informed about the expectations the school has of their behaviour, the manner in which these expectations will be rewarded and the response pupils can expect if they choose not to meet these expectations. It is based on respect for self, for others and for the environment. It is designed to encourage pupils to develop responsibility for their own behaviour and attitudes, both offline and online. However, we do acknowledge that we have a responsibility to consider a student's social, emotional and mental health needs when implementing the system and taking appropriate actions to deal with poor behaviour, as required.

The key principles of this policy are:

- to create a caring, orderly community in which effective learning can take place and where there is mutual respect between members;
- to ensure all stakeholders treat other people and their property with respect and consideration;
- to take a 'zero tolerance' approach to any form of bullying (including prejudice-based and discriminatory), peer-on-peer abuse and criminal/sexual exploitation in school and the wider community, including online;
- to encourage students to become self-disciplined, able to accept responsibility for their own actions and make positive choices;

- to support students to behave in a manner which allows other students to enjoy their educational experiences at the Hillcrest school;
- to develop in all students the ability to listen to others; co-operate and to appreciate other ways of thinking and behaving;
- to develop the Hillcrest community so that all members feel happy and safe, and develop a sense of worth, identity and achievement.

We aim to achieve this through a school behaviour policy based on rights, responsibilities and respect. We recognise that praise, rewards, privileges, and positive role-modelling support the development of self-discipline and the capacity to make positive choices.

We are aware that all children and young people may have found the longer-term impact of the Covid-19 pandemic particularly difficult and their increased stress may continue to have a significant impact on their emotional well-being, engagement in learning and behaviour. As a school, we recognise the difficulty some students faced, and may continue to do so, in re-engaging with structured learning, expectations, routines, relationships, social interactions, classroom dynamics and the school community. We will continue to implement a holistic '**emotional recovery approach**' which will focus on rebuilding the confidence and skills of all students to support them to reengage with their learning and continue as responsible members of our school community.

As outlined in 'Keeping Children Safe in Education' (September 2021), we recognise the important link between welfare and outcomes for all students. The DSL and safeguarding/pastoral team will take 'responsibility for promoting educational outcomes by knowing the welfare, safeguarding and child protection issues that children are experiencing, or have experienced, and identify the impact these might be having on children's attendance, engagement and achievement at school'.

### **Policy Objectives**

- To encourage positive behaviour, with all students and adults working to agreed standards
- To set expectations that all students will be encouraged to learn the social emotional and behavioural skills required for citizenship
- To maintain a school environment where students are encouraged to behave appropriately because they feel they are valued members of the school community, and that they are safe, secure and at ease.

### **Broad Guidelines for Behaviour and Discipline**

- 1 Every teacher will accept responsibility for high standards of discipline in the classroom and within the school environment.
- 2 Every student will accept responsibility for high standards of behaviour.
- 3 All staff will be consistent in their approach to discipline and behaviour and work within the framework of the Getting it Right policy.
- 4 Every student will be made aware by their teachers and their tutors of the Code of Behaviour and the school's high standards. The consequences of ignoring the 'Getting It Right' system will be clearly explained to students.
- 5 The Headteacher alone has the right to exclude students and to decide whether the exclusion is to be held on or off the school premises.

### **Links to other policies**

This policy links to the following other policies we hold in school:

- Anti-bullying policy
- Equality policy

- Safeguarding and Child Protection policy
- Care and Control policy
- On-line safety policy
- Health and Safety Policy
- Attendance policy
- Positive Mental Health policy
- Preventing Extremism policy
- Special Educational Needs policy
- Relationships and Sex Education policy

## **Section 2 - Teaching and Learning**

Our approach to learning supports recognition and inclusion for all. Maintaining good behaviour is the responsibility of all staff, governors and parents. Promoting positive behaviour enables high standards of teaching and learning to be achieved. A well-designed and relevant curriculum helps develop and maintain positive behaviour. Students learn more effectively when the curriculum is differentiated, and teaching styles and approaches accommodate individual learning styles and preferences. Engaging teaching plays a significant role in a students' attitude towards learning.

- Staff should use the most appropriate method of teaching, which draws on students' social, emotional and learning experiences and values their contributions.
- Students should be received into a classroom where routines are established and high standards expected.
- Explicit and regular praise should be used for all types of achievement.

The school follows a '**Positive Behaviour Management**' system (see examples below) which encourages all staff members to create learning environment to motivate students to behave appropriately in lessons. This approach is vitally important as part of our '**emotion coaching approach**'. We will endeavour to provide students with the skills and space to rebuild their confidence as learners and self-regulators. Effective classroom management skills are developed through experience and appropriate support from colleagues. Training and reflection on personal practice is very important, particularly in the implementation of whole school '**emotion coaching**' strategies as part of the wider 'positive behaviour management' system.

**Hillcrest School**  
A Specialist Maths & Computing College and Sixth Form Centre



**Always meet, great and correct** at the door as pupils enter the room. This brings positivity immediately to the lesson.

**Hostile** – 'Sally, sort that time out now. I'm sick of telling you that at the start of every lesson'.

**Assertive** – 'Morning Sally. Come on, you know what I expect about uniform from **every** student. Lets get it sorted so we can start the lesson quickly today'.

Try to issue clear instructions but in a positive way:

**Hostile** – ‘Sally, will you stop talking and turn round this way now’

**Assertive** – ‘Thank you **everyone** for looking this way. Sally, could you please do the same as **we** are all ready to start the lesson ..... Thank you Sally for being ready to listen’.

**Brian Canter** believes that giving students a degree of choice over their behaviour has a positive impact on the outcome of situations in lessons. His research shows that students are less likely to respond with a point blank refusal.

**Hostile** – ‘You have only got 20 minutes to finish that work. If it is not finished then you will lose your break / lunch to do it then’

**Assertive** - ‘I need you to finish this piece of work during this lesson, Sally. You've got 20 minutes left. If you don't choose to finish it during class time, then you're choosing to finish it during break/ lunchtime. It's your choice. I'll let you think about it'.

**This allows students not to lose face. Watching and waiting is, in a way, issuing a challenge. We need to be clear about expectations. This becomes a ‘WHEN / THEN direction** - ‘No you cannot go out because you have not finished your work’ becomes ‘When you have finished your work, then you can go out’.

In addition, well-prepared and stimulating lessons, in which pupils are aware of the lesson purpose, help to secure good standards of behaviour. Effective lessons are those in which pupils enjoy learning, are fully engaged, make progress and improve their attainment through sustained effort and commitment.

Effective lessons:

- give the big picture
- use positive language
- have high expectations
- address different learning styles
- review learning
- move pupils' learning on
- acknowledge and praise effort and progress
- provide students with the opportunity to talk about their feelings towards the learning and the support they may need to become more resilient and effective learners
- have challenge, pace and enjoyment.

To achieve this staff should:

- set behavioural objectives, when appropriate, as well as other learning objectives for the lesson
- arrive before the class and start the lesson on time
- ensure that students enter and leave the room quietly and sensibly

- display lesson objectives clearly
- refer regularly to the Code of Conduct
- ensure that all students are able to participate fully in the lesson
- emphasise the positive in learning and behaviour
- use praise and rewards fairly and consistently
- motivate, encourage and engage the pupils
- model and teach positive behaviour, including respect, empathy and social skills
- build positive and mutually trusting relationships with students
- make sparing, effective and fair use of reprimands
- avoid sarcasm, shouting and threats
- avoid humiliating pupils
- use both verbal and non-verbal communication techniques
- avoid punishing a class for the behaviour of individuals
- keep to time in the lesson and finish on time
- share good practice with colleagues
- allow students to talk openly about their feelings towards the learning process
- implement 'Emotion Coaching' strategies and interventions appropriate to the social and emotional needs of the student

## **ENCOURAGING POSITIVE BEHAVIOUR**

*We will ALL consistently apply the 'Getting it Right' Policy and ensure that we apply or carry out the following: Please refer to 'A Guide to Getting it Right.' (see appendix 1)*

### **CHALLENGE**

- Emphasise 'listening skills', 'politeness' and 'respect'
- The 'jewellery policy' in all
- The 'uniform policy' in lessons
- Speaking when member of staff is talking
- Inappropriate language and name calling

### **PUNCTUALITY**

- Every member of staff challenges every student who is out of a lesson. The student should have the permission section of their student planner signed.
- All staff to (a) issue a C1 if students are more than five minutes late to lessons without an acceptable reason.

### **CORRIDOR BEHAVIOUR**

- Ensure you are on duty as per the 'Duty Rota'.
- Keep to the left on corridors and stairs.
- No shouting/running

### **START AND END OF LESSONS**

- Meet and greet the class - be at the door before they arrive.
- Queue in straight lines outside classroom (where possible).
- Enter in single file, stand behind desks, and wait to be greeted before sitting down.
- Register taken whilst students write down learning outcomes/starter activity.
- End of lesson, stand behind chairs, check for litter, marks on desks. Ensure the next class has a positive learning environment to come into. 'DTNCAF' - Do the next class a favour!
- Dismissed by rows in silence.

### **REWARDS**

- There should be a 5:1 praise to sanction ratio

- All staff to issue at least 20 GIR Bonus Points each half term.
- All staff to issue at least ten Praise Cards each term. (If you do not have a full timetable please reduce accordingly.)
- All staff to issue Community Award Certificate if students participate in activities.

## **ASSEMBLIES**

- All staff to arrive at the Theatre Hall or Studio ready for assembly to commence at 9.00
- Staff attached to a Year group to attend relevant Assemblies.
- SLT and College Learning Leaders as per Assembly rota

## **Section 3 - Maintaining Discipline**

Staff are encouraged to apply their own behaviour management techniques as they develop their relationship with teaching groups. It is important to establish clear routines and expectations and implement a range of strategies that will solve any potential behavioural issues in the longer term.

The staff CPD programme supports staff to effectively manage behaviour in their classrooms with specific focus on de-escalation and emotion coaching techniques. In addition, wider safeguarding training on adverse childhood experiences, peer-on-peer abuse, online safety, domestic and sexual violence, radicalisation, provides staff with a context of the range of factors that could impact on the behaviour of individual and/or groups of students.

During lessons it is vitally important for staff to implement their own behaviour management strategies alongside any consequences they may issue. All staff should consider the social and emotional needs of individual students when implementing strategies, particularly for any student(s) still affected by the longer term implications of multiple lockdown periods at home. This may continue to manifest itself in poor behaviour and limited engagement in learning. The 'Getting It Right' policy is there to support all staff but is not the only behaviour strategy open to staff. For example, staff might;

- Speak to a student before they enter the room and set clear expectations
- Use non-verbal forms of communication to reinforce behaviour expectations
- Move or suggest moving a student to another seat
- Use praise to remind a student of their ability to behave appropriately
- Pair the student with another student who will have a positive impact on their behaviour and attitude towards learning
- Vary the activity to find ways of encouraging the specific student to engage positively in the learning experience
- Allow the student to take some time out of the lesson before re-engaging them back into the lesson

Staff may consider using the following techniques throughout the academic year.

- Modified intervention / seating plan at start of the lesson
- Moved student to another seat during the lesson
- Consider behavioural / learning needs of individual students during the lesson planning process to ensure students can either access or feel engaged with the learning
- Set targets with the student for future improvement
- Modified approach to student, i.e. – effective use of praise / rewards
- Discussed issue with other department staff to identify other possible strategies
- Discussed issue with other staff who teach the identified student to explore successful strategies
- Discussed issues with College Learning Leader / Form Tutor
- Notified parents of behavioural issue (letter, message in planner)

## **Section 4 - Practice and Procedures: Roles and Responsibilities**

The promotion of positive behaviour is the responsibility of all members of the school community, including parents and carers. Not all members of the school will play the same part in this process, but each section of the community will have a specific role.

The governing body will continue to work with other members of the school community to review and, if necessary, revise the principles underpinning this policy. For example, they will ensure that the policy and its implementation is consistent with the school's equal opportunities policy. Specific responsibilities of the governing body include:

- approving policies, including this behaviour policy
- monitoring fixed term and permanent exclusions
- ensuring the needs of students at risk of permanent exclusion are met.

The Headteacher, with the assistance of other members of the Leadership Team, is responsible for the form and content of the policy, and for its implementation in ways that maintain a school ethos that encourages positive behaviour.

All staff have a responsibility to ensure the policy informs their day-to-day actions and that they apply the policy fairly and consistently. All staff have a role to play in keeping the policy alive throughout the school, including through providing mutual support to colleagues, and modelling the social, emotional and behaviour skills and high standards of behaviour expected from students.

Students have a role in shaping and promoting the school's behaviour policy. They will contribute to the detail of the policy through their involvement in defining expectations and rules, and developing rewards, motivational strategies, sanctions and consequences. This will be achieved through the School Council, form time and PSD days. Students have a responsibility to report incidents of bullying, harassment, abuse or intimidation, both offline and online, and a role in offering support to their peers through activities (peer ambassador mentoring)

Parents and carers have a responsibility for their child's behaviour inside and outside school, which they discharge by the standards they set and the way they encourage students' progress at home. They also have a role to play in advising on the continuing development and improvement of the policy.

## **Section 5 - The 'Getting It Right' system**

The 'Getting It Right' system underpins all aspects of the behaviour policy at the Hillcrest School. Staff and students are aware of the key elements of the system and its implementation in lessons and around school. The system is designed to both reward students for consistent high levels of work, attitude, behaviour and punctuality, as well as ensuring a tiered system of consequences for students who fail to 'Get it Right'. (Appendix 1)

### **Sanctions**

Sanctions should be used to help students make appropriate choices about their behaviour. Where they breach the 'Getting It Right' system, students have a right to expect fair sanctions, applied consistently. The most appropriate sanction is one designed to put matters right and to encourage better behaviour in the future. It is not appropriate, therefore, to punish whole groups for the misdemeanours of a few, or to impose a sanction that may humiliate students. Sanctions will lose their effectiveness if students do not regard them as fair. Staff are therefore advised to make it clear that they are condemning the behaviour not the person and avoid early escalation to severe sanctions, reserving them for the most serious or persistent breaches of the 'Getting It Right' system.

The 'Getting It Right' system has a definite set of tiered sanctions (see appendix 4) aimed to support students to reflect on and modify their behaviour in the classroom environment. Where students make inappropriate choices about their behaviour a series of consequences should be consistently followed by members of staff. Guidance is very clear for all staff on the reasons why students may receive a C3 for their behaviour in lessons, around school or in the wider community. However, staff are encouraged to use contextual information on a student's social, emotional and mental health needs when implementing behaviour strategies. (see Appendix 1 and 2)

Students receiving a C3 in lessons or around the school will be sent to the Centre. The purpose of the period in the Centre is to support the student to reflect on their behaviour and consider different ways in which they could have managed their own behaviour. Students will remain in the Centre for a fixed period



of time and receive a 60-minute Senior Leadership detention. Staff supervising the Centre will consider the student's social, emotional and mental health needs, as well as the reason why the C3 was issued, when determining the length of time the student will remain in the Centre. This will provide the opportunity for staff to ascertain any mitigating factors that led to the poor behaviour, ie – bullying, relationship difficulties with other students in the group, issues in the wider community and online.

Getting It Right data is analysed by the Deputy Headteacher (Pastoral) on a weekly basis and appropriate data is shared with College Learning Leaders and Learning Managers each week. A half-termly analysis is also completed by the Deputy Headteacher of individual 'Getting It Right' totals and intervention plans, outlining appropriate strategies and support, are developed by the Learning Co-ordinators, form tutors, SENDCO and Designated Lead for Mental Health. College Learning Leaders and Learning Managers should consistently follow the procedures outlined in the whole school behaviour management system and intervention programme. (see appendix 3 and 4)

Students who fail to meet expectations on a weekly basis will be placed on a stage 1, 2 or 3 monitoring report for a fixed period of time. However, the Deputy Headteacher (Pastoral) will take a number of factors into account, including a student's mental health and emotional well-being, when determining the level of pastoral monitoring and may explore other options to address the behavioural needs, ie – accessing support from Learning Mentor or Emotional Well-Being Co-ordinator. (see appendix 4)

### **Stage 1 Form Tutor Report**

Students will be placed on a stage 1 report for two weeks for the following reasons:

- Receiving three consequences in a week
- Arriving late to school twice in a week

### **Stage 2 College Leader Report**

Students will be placed on a stage 2 report for two weeks for the following reasons:

- Receiving 2 or more consequences in a week while on a stage 1 form tutor report
- Receiving 4 consequences in a week
- Arriving late to school three times in a week
- Receiving a C3 consequence in lessons
- Receiving a C2-C3 for behaviour out of lessons
- Receiving a second cumulative C3 consequence during the year

### **Stage 3 Senior Leadership Report**

Students will be placed on a stage 3 report for three weeks for the following reasons:

- Receiving 2 or more consequences in a week while on a stage 2 CLL report
- Receiving a C3 while on stage 2 report
- Receiving 5 consequences in a week
- Late to school four times in a week
- Receiving 2 x C3 consequence in a week for behaviour in/out of lessons
- Receiving a third (or above) cumulative C3 consequence during the year
- Receiving an internal or external exclusion
- Failing to attend 2 SLT detentions

If a student fails to comply with the expectations outlined at each stage, there are clear interventions and consequences that will be followed by College Leaders and the Senior Leadership Team, as outlined in appendix 1 (page 32) and appendix 4.

## **Section 6 - Mobile phones / Smart Watches / Technology**

Students are not allowed to have a mobile phone / smart watch visible in school from the moment they enter the school gates at the start of the day to the moment they leave the school gates at the end of the school day. This principle also applies to students who use their mobile phone during the school day even if they are not witnessed doing so by a member of staff, ie – student phones their parent to report an issue in

school or to advise they are feeling unwell. The school does not take any responsibility for the loss or damage to any devices brought into the school by the student.

If a student is seen with a mobile phone/ smart watch, they will receive a C3 SLT detention but will not be sent to room 35 if they give their mobile phone to the member of staff. Parents/carers will be contacted by the relevant College Leader and the mobile phone / smart watch will remain locked in the school safe until the parent/carer collects from school. If this behaviour is repeated again, the mobile phone / smart watch will be confiscated and parents/carers will be invited into school to meet with their child's College Leader. The device will be stored in the school safe until this meeting has taken place. If this behaviour is repeated for a third time, the mobile phone / smart watch will be confiscated and parents/carers will be invited into school to meet with the Deputy Headteacher (Pastoral). The device will be stored in the school safe until this meeting has taken place. If this behaviour is repeated for a fourth time, the mobile phone /smart watch will be confiscated and parents/carers will be invited into school to meet with the Headteacher. The device will be stored in the school safe until this meeting has taken place.

If a student refuses to give their mobile phone / smart watch to the member of staff, they will be issued with a C3 (SLT detention) and sent to room 35. The student will then be required to give their mobile phone / smart watch to the member of staff in room 35. If the student hands over their mobile phone / smart watch, they will be issued with a one-day internal isolation and the device will be kept in school until the parent/carer attends a meeting with the Deputy Headteacher (Pastoral). If this behaviour is repeated on a second occasion, the student will be issued with a one day internal exclusion and the device will be kept in school until the parent/carer attends another meeting with the Deputy Headteacher (Pastoral). If this behaviour is repeated on a third occasion, the student will be issued with a one day fixed term external exclusion and the device will be kept in school until the parent/carer attends a meeting with the Headteacher.

However, the school will view each case individually, as some students may continue to experience attachment difficulties as a result of being separated from family members and may feel they need their mobile phone to maintain contact with family members to check on their well-being. Students will still be required to hand their mobile phone to a member of staff but will not necessarily face the sanctions outlined above. Under these circumstances, the school will endeavour to make contact with home to alleviate the student's anxiety and the device may be returned to the student at the end of the day, after securing agreement from the parent/carer.

Using a mobile phone or a similar device to record conversations, make videos or take photographs of any member of the school community (staff, students, visitors, parents/carers), without their permission, is not allowed and will result in a fixed term exclusion. Similarly, the display, supply or posting of any such materials will result in a fixed term exclusion.

In addition, in line with our Anti-Bullying Policy, the school reserves the right to confiscate and search a device if concerns about cyber-bullying, online abuse, violence and/or sexual harassment, criminal or sexual exploitation, are reported to staff. While, we do not take responsibility for inappropriate use of digital media outside of school hours or outside of the school premises, such issues which affect the running of the school and the well-being of staff and other students, will result in sanctions in line with the 'Getting It Right' policy and the possible involvement of any appropriate agency (ie – Police, Children's Social Care). Therefore, the school reserves the right to issue a fixed term or permanent exclusion if a student's physical or online behaviour, out of school, brings the school into disrepute and/or poses a risk to the safety of other members of the school community.

As outlined in our Anti-Bullying Policy, the same principle applies to all forms of inappropriate online behaviour using technology in school and any devices loaned by the school for a student to use at home (ie – remote learning). All online activity is monitored by Smoothwall and appropriate sanctions will be implemented, in line with the 'Getting It Right' policy, for any forms of bullying, discrimination, online abuse, threats of violence or harassment (including sexual).

## **Section 7 – Uniform**

We expect our students to take pride in their appearance and we believe that the wearing of school uniform fosters a sense of identity. If students attend school inappropriately dressed, their parents will be contacted and arrangements will be made for the student to either return home to collect the correct uniform or a

timescale will be agreed with the College Leader for the uniform or appearance matter (ie – hair colour) to be resolved. Students are not allowed to attend lessons out of uniform and may be sent to room 35 until the matter is resolved. The school will endeavour to provide support for parents unable to resolve the uniform issue in a timely manner. Students will be given a red card by their College Leader to authorise inappropriate uniform after communication with parents/carers. Staff have the right to confiscate any inappropriate items or clothing (ie – caps, hoodies, bandannas) at any time of the school day, including as students arrive to and leave from school (inside the school gates).

Blazers must be worn at all times around the school building and in lessons, unless students are given permission by teachers to remove their blazer in the classroom. Ties must be worn appropriately at all times during the school day. Outdoor coats are not allowed to be worn in school unless a student is wearing it outside the school building at break and lunchtime. Trainers and boots are not to be worn. Students will be expected to wear a pair of school authorised shoes if they fail to wear appropriate footwear for school. No back jeans, leggings or cropped/slim legged/tight fitting trousers are allowed.

Jewellery must not be worn. One pair of small stud earrings is allowed. Body piercing, e.g. nose studs, eyebrow studs, tongue studs etc are not permitted. Students will be asked to remove body piercings and will be sent home if they fail to do so. Jewellery, if worn, will be taken and will be returned to students at the end of term, or parents may come in person to collect the item. Hair styles should be appropriate for school and without unnatural colouring e.g. blue, purple, red.

Make-up, false eye lashes and nail varnish, including nail extensions should not be worn for school. Students who arrive at school wearing make-up or nail varnish will be given the appropriate materials to ensure it is removed. Students who refuse to co-operate with requests to remove make-up, nail varnish, piercings, inappropriate clothing and/or inappropriate footwear, will receive a C2 or C3 for failure to comply with school expectations. In some circumstances, parents will be asked to keep their children at home (authorised absence) until the student complies with school expectations.

## **Section 8 – Peer-on-Peer Abuse**

As outlined in 'Keeping Children Safe in Education' (September 2021), peer-on-peer abuse is abuse by one or more students against another student. It can manifest itself in many ways and can include:

- bullying (including cyber-bullying, prejudice-based and discriminatory bullying);
- abuse in intimate relationships between peers;
- physical abuse (hitting, kicking, shaking, biting, hair pulling, or otherwise causing physical harm);
- sexual violence and harassment;
- consensual and non-consensual sharing of nudes and semi-nude images and/or videos;
- causing someone to engage in sexual activity without consent, such as forcing someone to strip, touch themselves sexually, or to engage in sexual activity with a third party;
- upskirting (which is a criminal offence), which typically involves taking a picture under a person's clothing without their permission, with the intention of viewing their genitals or buttocks to obtain sexual gratification, or cause the victim humiliation, distress, or alarm; and
- initiation/hazing type violence and rituals.

Hillcrest School believes that all peer-on-peer abuse is unacceptable and has a zero tolerance approach. Abusive comments and interactions, including online, should never be passed off or dismissed as 'banter' or 'part of growing up'. Nor will harmful sexual behaviour be dismissed as the same or 'just having a laugh'. All reports peer-on-peer abuse will be treated as a safeguarding matter and in line with our Child Protection policy. Further guidance on the school response to peer-on-peer abuse can be found in the Anti-Bullying policy.

After a concern has been reported and investigated, we will take appropriate disciplinary steps, as required. Action must be appropriate to the age of the child but may include:

- An official warning to stop offending.
- Three Houses early intervention reviews and target setting process
- Informing the perpetrator's parents.
- Co-ordinating a 'Restorative Justice' mediation meeting between the victim and perpetrator.

- Meeting with parents/carers to agree a Behaviour Contract.
- Formal review of Behaviour Contract over an agreed period of time.
- Formal internal or fixed term exclusions from school for the incident or if the bullying continues to persist.
- Arranging a passport or managed move placement to another school.
- Informing the police of on-going bullying concerns as necessary, particularly in the community, or if the law has been broken by the behaviour of the alleged perpetrator(s)
- Referring to Early Help, Birmingham Children's Trust or Forward Thinking Birmingham if the incident is dealt with as a safeguarding concern and the victim is suffering, or is likely to suffer, significant harm. The same principle may also apply to the alleged perpetrator(s).

Disciplinary action against alleged perpetrators can still be taken in school while other investigations by the police and/or children's social care are on-going, as well as support for victims. The fact that another body is investigating or has investigated an incident does not prevent the school from coming to our own conclusion, on balance of probabilities, about what happened, and imposing an appropriate sanction. However, we will consider if, by taking action, it would prejudice an investigation and/or any possible prosecution. We will communicate with the police and/or children's social care about the outcomes of our internal investigations and seek advice before implementing any disciplinary sanctions.

If a reported allegation is determined to be unsubstantiated, unfounded, malicious or false, we reserve the right to implement appropriate sanctions to the student who made the allegation, as well as seeking appropriate support (ie – early help, children's social care, FTB) as the child may have been abused themselves and their behaviour was a cry for help.

## **Section 9 - Rewards**

Frequent praise and reward for achievement are features of teaching and learning at Hillcrest School, so that pupils receive recognition for their positive contributions to school life. The school believes that every student should have their achievements acknowledged and when appropriate rewarded. Such recognition:

- Builds student self-esteem and confidence.
- Helps to create a positive learning environment.
- Highlights the importance of good behaviour.
- Encourages students to participate in a variety of activities.
- Encourages students to set themselves the highest targets.
- Contributes to reinforcing positive student-staff relationships

## **Getting It Right Rewards**

Every term parents/carers will receive a letter informing them of the number of GIR points their child earned in comparison with the year group and school average. A list for each year group will be displayed each month to allow students to see their position in the year group in comparison with other students.

The Getting It Right system rewards students for excellent attendance, behaviour, punctuality, organisation and preparedness for learning. Students need to maintain attendance above 95% throughout the year as they can only earn GIR points on the days they are in school. At the end of the year students with a minimum of 95% GIR points will receive a 'Hillcrest Star' badge, a minimum of a bronze GIR certificate and earn a place at the GIR Winner's Event. **However, students will not be allowed to participate in the event if they receive more than 2 x C3, receive more than one exclusion from school, have attendance below 90% and are late for school more than 15 times, even if they achieve higher than 95%.**

This threshold may be modified again in 2021-22 to take individual circumstances into account as a result of any periods of self-isolation, remote learning or local/national lockdowns. The Deputy Headteacher (Pastoral) will endeavour to take any mitigating circumstances into account when calculating all GIR scores.

At the end of each half-term students will be awarded with certificates to recognise their progress towards the expected minimum point's threshold;

GOLD certificate – awarded to students who achieve >99-100% GIR  
SILVER certificate – awarded to students who achieve >97-99% GIR  
BRONZE certificate – awarded to students who achieve 95-97% GIR

At the end of the year a special celebration event will be held to celebrate the achievements of those students who achieve a GOLD GIR certificate.

### **GIR Bonus Points**

We firmly believe in recognising good work and effort. We have a **GIR Bonus Points Award Scheme** through which students gain recognition of their achievements in relation to their academic work.

☺ 30 are required for a Bronze Certificate, 40 for a Silver Certificate, 50 for a Gold Certificate, 60 for a Platinum Certificate, 80 for a Diamond Certificate and 100 for an Emerald Certificate.

### **Praise Postcards**

These will be posted home to students to inform their parents /carers of an achievement in school in relation to their academic work, attitude, good manners or anything else that deserves praise.

### **Community Certificates**

These will be awarded to students who make a contribution to the Hillcrest community. This might include being part of a team, taking part in an event or being a guide when we have visitors in school.

### **Headteacher's Tie**

**This will be awarded for exceptional performance or outstanding service in addition to 'Hillcrest Superstars' as indicated below:**

#### **'Hillcrest Superstar'**

This is the highest level of reward we have at Hillcrest. A Hillcrest Superstar will be someone who at the end of the year has:

- ☺ **A minimum of 95% 'Getting it Right' Points**
- ☺ **50 or more GIR Bonus Points**
- ☺ **6 Community Certificates**

#### **OR An exceptional one-off achievement e.g. English Schools Athletics Gold Medal**

Again, this threshold may be modified in 2021-22, based on the impact a potential phased return to school and individual absence, may have on a student's ability to meet these specific thresholds.

**Hillcrest Superstars** will receive a special certificate and their names will be displayed on a Roll of Honour. They will also be awarded with a special Headteacher tie – one which is different in design to the school tie. Students who achieve the award for a second time receive a special glass trophy; for the third time a Headteacher Medal and for a fourth time a Headteacher Cup.

An Awards Morning is held annually to which parents/carers are invited. Prizes are presented to those who are judged to have made the most effort or progress or who have given outstanding service to the school throughout the year.

## Extended Learning (Homework)

### GIR: Extended Learning Awards (TERMLY)

**Gold Award: 100% completion rate**

Student completes **EVERY** piece of extended learning in **ALL** subjects in a term.

**Silver Award: 98% completion rate**

Student only receives **1** x Homework consequence in all subjects in a term

**Bronze Award: 95% completion rate**

Student only receives **2** x Homework consequences in all subjects in a term

**Students who fail to complete THREE or more pieces of extended learning in all subjects will not be eligible to receive an award.**

H Consequences can also be issued when the EL has been completed but not to the appropriate standard

### GIR: Extended Learning Awards (End of Year)

**Gold Award: 100% completion rate**

Student completes **EVERY** piece of extended learning in **ALL** subjects by the end of the school year.

**Silver Award: 98% completion rate**

Student only receives **3** x Homework consequence in all subjects by the end of the school year.

**Bronze Award: 95% completion rate**

Student only receives **5** x Homework consequences in all subjects by the end of the school year

**Students who fail to complete SIX or more pieces of extended learning in all subjects will not be eligible to receive an award at the end of the year.**

H consequences can also be issued when EL has been completed but not to the appropriate standard

## Section 10 – Detentions

All after school detentions are centralised and run by the staff as a whole on a rota basis and not individually. This takes away the need for staff to issue and hold their own detentions.

The purpose of detention is to contribute to the raising of students' standard of behaviour across the school. We recognise and accept that a detention **may not** solve the underlying problem causing misbehaviour. However, it may cause students to 'think twice', and may act as a deterrent to others. **The importance of a detention is that it gives a clear message to all students that as a school we will not accept poor attitudes to learning.**

There are four forms of after school detentions:

- 'Extended Learning' Support and Improvement Detentions (Tuesday or Thursday each week)

- Behaviour Detention (C2 / C3 detentions to be served on the same day the consequence is issued)
- Lates detentions (C2 late detentions to be served on the same day the student is late to school)
- SLT Detention (Friday each week)

## ‘Extended Learning’ Detentions

It is essential that students meet expected ‘Extended Learning’ deadlines set by their teachers. Students who fail to complete a piece of ‘Extended Learning’ to the expected standard will receive a ‘H1 consequence’ and a 30 minute ‘Homework Detention’.

If this pattern persists in a specific subject, students will receive further ‘H consequences’, as outlined below:

## Department Interventions: H2

### Issue:

Student fails to complete a **second** piece of extended learning in a subject (H2)

### Staff Action:

- Teacher speaks to student about issue, offers support and sets new deadline. Teacher should also speak with SENDCO as necessary.
- Teacher issues a **H2 consequence** if work still not completed
- Admin Team send a **H2 letter** home to parents

### Consequence:

- Student issued another **30 minute detention** (extended to 60 minutes if student fails to attend)

## Department Interventions: H3

### Issue:

Student fails to complete a **third** piece of extended learning in a subject (H3)

### Staff Action:

- Teacher issues a **H3 consequence**
- Teacher should seek further support from SENDCO as required.
- Admin Team send a **H3 letter** home to parents
- Curriculum Manager checks appropriateness and accessibility of EL tasks set

### Consequence:

- Student issued a **60 minute detention** (extended to 60 minute SLT detention if student fails to attend)
- **Curriculum Manager** for the subject meets with student to discuss on-going concerns (SENDCO may be invited to this meeting as required)
- **Curriculum Manager** puts student on a **three week department monitoring report**
- **Curriculum Manager** rings parents to discuss impact on academic progress
- Curriculum Manager may request support from SLT Manager based on number of students to meet and monitor.

## Department Interventions: H4

### Issue:

Student fails to complete a **fourth** piece of extended learning in a subject (H4)

If a student is at level H4 in three or more different subjects, the CLL and DHT (Pastoral) will co-ordinate with relevant CLM's and SLT Managers to implement H4-10 actions at a multi-subject level.

### Staff Action:

- Teacher issues a **H4 consequence**
- Teacher seeks further advice from SENDCO as required.
- Admin Team send a **H4 letter** home to parents
- Department SLT Manager checks appropriateness and accessibility of EL tasks with teacher and CLM

### Consequence:

- Student issued a **60 minute SLT detention** (student will receive a half-day internal isolation if they fail to attend)
- **Department Senior Leadership Manager (and SENDCO if required)** meets with student to discuss on-going failure to complete extended learning work
- **Department Senior Leadership Manager** rings parents to discuss concerns
- **Student placed on SLT monitoring report for three weeks.**

## Department Interventions: H5

### Issue:

Student fails to complete a **fifth** piece of extended learning in a subject (H5)

### Staff Action:

- Teacher issues a **H5 consequence**
- Teacher requests further support from SENDCO as required
- Admin Team send a **H5 letter** home to parents
- Department SLT Manager checks appropriateness and accessibility of EL tasks with teacher and CLM

### Consequence:

- Student issued with another **60 minute SLT detention** (student will receive a full-day internal isolation if they fail to attend)
- **Department Senior Leadership Manager and College Leader (and SENDCO as required) meet with student and their parents** to discuss on-going failure to meet school expectations
- Student placed on '**Extended Learning Support Plan**' – targets set in SLT/CLL meeting
- Student placed on **SLT monitoring report for a further three weeks.**



## Department Interventions: H6

### Issue:

Student fails to complete a **sixth** piece of extended learning in a subject (H6)

### Staff Action:

- Teacher issues a **H6 consequence**
- Teacher requests further support from SENDCO as required
- Admin Team send a **H6 letter** home to parents

### Consequence:

- Student issued with a **60 minute SLT detention**
- Student issued a **full day internal isolation** in Room 35
- **Department Senior Leadership Manager and College Leader (and SENDCO as required)** meets with student and parents **again** to discuss persistent failure to meet school expectations.
- Targets are reset on '**Extended Learning Support Plan**'
- **Student placed on SLT monitoring report for a further three weeks.**

## Department Interventions: H7-8

### Issue:

Student fails to complete a **seventh/eight** piece of extended learning in a subject (H7-8)

### Staff Action:

- Teacher issues a **H7/H8 consequence**
- **Teacher requests additional support from SENDCO as required**
- Admin Team send a **H7/H8 letter** home to parents

### Consequence:

- Student issued with a 60 minute SLT detention
- Student issued a **two day internal isolation** in Room 35
- **Headteacher, Department Senior Leadership Manager and College Leader (and SENDCO as required)** meets with student and parents again to discuss persistent failure to meet school expectations.
- Targets are reset on '**Extended Learning Support Plan**'
- **Student placed on SLT monitoring report for a further three weeks.**

## Department Interventions: H9-10

### Issue:

Student fails to complete a **ninth/tenth** piece of extended learning in a subject (H9/10)

### Staff Action:

- Teacher issues a **H9-10 consequence**
- Admin Team send a **H9-10 letter** home to parents

### Consequence:

- Student issued with a **60 minute SLT detention**
- Student issued an **internal exclusion**
- **Headteacher, Department Senior Leadership Manager and College Leader (and SENDCO as required)** meet with student and parents to discuss persistent failure to meet school expectations.
- Targets are reset on '**Extended Learning Support Plan**'
- **Student placed on SLT monitoring report for a further three weeks.**

## **Behaviour Detentions**

Students who receive a C2 for behaviour in lessons / around school will receive a 30-minute detention, which will be served on the day the consequence is issued. If a student fails to attend the 30-minute detention, they will be issued with a 40-minute SLT detention. If a student fails to attend this SLT detention, the student will serve a full day internal isolation in room 35 and the 40-minute detention will be reissued.

Students who receive a C3 for behaviour in lessons/around school will receive a 60-minute detention, which will be served on the day the consequence is issued. If a student fails to attend the 60 minute detention, they will be issued with a 70-minute SLT detention. If a student fails to attend this SLT detention, the student will serve a full day internal isolation in room 35 and the 70-minute detention will be reissued.

All detentions will be served after school from 3.20pm onwards. Parents/carers will be notified by text message if their child is required to remain behind after school that day to serve either a 30 or 60-minute detention.

## **Late Detentions**

Students will receive a C2 consequence if they arrive late to school after 8.50am. They will be required to serve a 30-minute detention on the day they are late to school. If a student fails to attend the 30-minute detention, they will be issued with a 40 minute SLT detention. If a student fails to attend this SLT detention, the student will serve a full day internal isolation in room 35 and the 40-minute detention will be reissued.

The school will take specific circumstances into account when deciding whether to issue a detention, ie – proof of a medical appointment, interview, personal family circumstances.

All detentions will be served after school from 3.20pm onwards. Parents/carers will be notified by text message if their child is required to remain behind after school that day to serve the 30-minute late detention.

## **SLT Detentions**

SLT detentions will take place on a Friday after school for 40-70 minutes. Parents/carers will be notified by letter if their child is expected to serve a SLT detention. The letters will be issued to students and it is their responsibility to ensure the parent/carer receives the letter.

If a student fails to attend an SLT detention, without prior notification from parents/carers, they will receive an internal isolation for failure to meet SLT expectations (as outlined above)

However, we do recognise that detentions may not be the most appropriate ways of managing the behaviour of students with complex social, emotional and mental health needs. Under such circumstances, the school will explore other possible routes to support the student to reflect on and improve their behaviour / completion of homework. This may involve arranging for the student to attend a supervised 'homework club' at the end of the day to access support from our SENDCO and teaching assistants.

## **Internal isolation consequences**

A student may receive an internal isolation consequence for the reasons outlined below:

- Failure to attend a SLT detention
- Receiving four C3 consequences during the academic year (one-day internal isolation)
- Receiving three consequences in a week while on stage 3 SLT report (half day internal isolation)
- Receiving four or more consequences in a week while on stage 3 SLT report (one-day internal isolation)

## **Section 11 – Supporting students with additional needs**

As part of our commitment to work with students experiencing behavioural difficulties, parents / carers will

be obliged to agree to allow their child to attend compulsory after-school 'Behaviour Intervention' sessions as outlined in appendix 4. The sessions will be co-ordinated by the Deputy Headteacher (Pastoral) and will be aimed at equipping students with techniques to allow them to manage their own behaviour more effectively.

Students may be placed on the inclusion register for behavioural issues to access 'SEND Support'. The school will follow 'Early Help' guidelines for identifying students with social, emotional and mental health issues, with specific focus on the **underlying reasons** for poor behaviour rather than the behaviour itself. Evidence suggests SEND children are three times more likely to experience peer-on-peer abuse, which can have a significant impact on their behaviour and attitude to learning. (KCSIE – September 2021) Students on the inclusion register for behaviour will access support through SEND Support Profiles. The profiles are designed to identify the factors affecting progress and to put a systematic programme of support in place. There are clear stages within the process to track the impact of interventions and modify support systems as necessary (**see appendix 4**). Parents will be expected to attend all review meetings once the support programme has started.

As outlined in our Positive Mental Health and Special Educational Needs policies, we recognise that standardised behaviourist approaches are not successful for all students. This is especially true for students with complex social, emotional and mental health needs, particularly those who have experienced Adverse Childhood Experiences (ACEs). This may include students who have experienced developmental trauma and loss or vulnerable children in the care system. We acknowledge that 'standardised' behaviourist approaches may re-traumatise them and fail to teach them how to express their emotions in a more appropriate manner.

Staff are encouraged to recognise and consider such factors when implementing sanctions to specific students. This is a key element of the '**Trauma and Attachment Aware Approach**' that underpins this policy and is of particular importance as part of our wider '**emotion coaching**' approach. As part of this approach all staff recognise:

- behaviour is a way of students and other adults communicating an emotional need;
- being fair is not about everyone getting the same but about getting what they need;
- changing or modifying how we respond to behaviour does not mean we compromise expectations;
- there are often underlying feelings and emotions that might drive behaviour, rather than the behaviour itself; and
- not all behaviours are a matter of 'choice' and not all factors linked to a student's behaviour is within their control.

Additional support will be accessed, as necessary, from the Pupil Support Service, Educational Psychologist Service, City of Birmingham School and the Oaks Behaviour mentor. The school will ensure that students and their families participate as fully as possible in decisions and are provided with information and support. The views, wishes and feelings of the student and their parents will always be considered. This is particularly relevant for students with diagnosed or suspected mental health issues that may impact on their behaviour.

The school will endeavour to support students at such times, intervening well before mental health problems develop. Continuous professional development for staff that makes it clear that promoting good mental health is the responsibility of all members of school staff and community, informs them about the early signs of mental health problems, what is and isn't a cause for concern, and what to do if they think they have spotted a developing problem. The school will also work with others to provide interventions for pupils with mental health problems that use a graduated approach to inform a clear cycle of support: an assessment to establish a clear analysis of the pupil's needs; a plan to set out how the pupil will be supported; action to provide that support; and regular reviews to assess the effectiveness of the provision and lead to changes where necessary. For example, our Designated Mental Health Leader works closely with the Oaks Emotional Well-Being Co-ordinator to complete RCADS assessments to identify the nature and level of support required in weekly meetings in school with the Emotional Well-Being Co-ordinator.

The Hillcrest School is committed to the concept of equal outcomes for all pupils. Some students will, therefore, need differentiated forms of support to help them fulfil their behavioural and academic potential. The school will ensure that differentiated strategies are available to students to meet their needs.

This Early Help support might include:

- regular pastoral reviews to identify those pupils most at risk, ie – Three Houses
- support from the form tutor as part of the 'Academic Mentoring programme'
- short courses on elements of social, emotional and behavioural skills delivered through the Senior Learning Mentor in the Learning Base
- contact with parents/carers in the early stages of a problem
- if the pupil's problems are identified as having a SEN aspect, referral to the school's SENCO and additional in-class support from a teaching assistant
- completion of a 'Think Family' referral to identify any form of external support needed
- referrals for specialist advice, either for individual pupils, or more generally, for whole school issues relating to behaviour
- consultation with parent/carers and family sessions
- one-to-one counselling with a trained specialist.
- use of the 'Peer Ambassador' scheme to support and guide students
- Completion of a 'Early Help' referral to access support if the behaviour issues are linked to wider issues in the family

## **Section 12 - The OAKS Sharing Panel (Passport and Managed Moves)**

The Hillcrest School works within the OAKS Collegiate. Behaviour management is a key aspect of this partnership. Schools within the network meet every half-term for a 'Sharing Panel' meeting to discuss behavioural concerns and develop strategies to support students to manage their behaviour. Students may be taken to the Sharing Panel if their behaviour is still a significant cause of concern despite the interventions outlined in the Pastoral Support Plan, including behaviour online and in the community. There are two clear processes that are used by the Sharing Panel to achieve this objective – the Passport and the Managed Move schemes.

### **Passport Programme**

Students experiencing difficulties in managing their behaviour may be referred to the Passport programme. Students may be placed on a passport placement for persistently failing to comply with school expectations (see appendix 4) or for a one-off incident in school and/or the community that resulted in a fixed term exclusion.

This is a six-week placement at another school in the OAKS Collegiate. The aim of the programme is to encourage students to reflect on their behaviour during their placement and return to Hillcrest with a more positive outlook on their own behaviour. During the passport placement support is put in place to ensure the student has the opportunity to maximise their placement experience and return to their original school better prepared to manage their own behaviour.

Prior to the placement a meeting will be held with the Deputy Headteacher (Pastoral), College Learning Leader, student, parent / carer and, where possible, the OAKS Behaviour Co-ordinator. The purpose of the meeting is to explain the passport programme and secure consent from the parent / carer for the placement to commence. The College Learning Leader will complete the necessary paperwork and forward it to the placement school.

The OAKS Behaviour Co-ordinator will lead an initial induction meeting at the placement school and targets will be agreed, using the 'Sharing Panel Mentoring Form' and 'Passport Contract', for the student to achieve during the six-week placement, as well as outlining the support that will be provided by the placement school. During this meeting relevant behavioural, learning and safeguarding information will be shared by the Deputy Headteacher (Pastoral). The OAKS Behaviour Co-ordinator will ensure that school uniform is provided for the student as part of the process.

During the six-week period, the placement school will complete a weekly review, using red, amber and green traffic lights, which will be shared with the Deputy Headteacher (Pastoral) at Hillcrest. If the review is highlighted as amber the placement school will organise an internal review meeting with the student,

parent/carer and Deputy Headteacher (Pastoral). If the review is highlighted as red, the placement school will organise an emergency review meeting, chaired by the Oaks Behaviour Co-ordinator, during which a decision will be made on whether the placement will continue. If it is agreed that the placement will continue, a new set of targets will be formally agreed and monitored closely by staff at the placement school.

If at any time the six-week placement is deemed to be failing, the Headteacher at the placement school will contact the Headteacher at Hillcrest School, who will then notify the parents/carers of the placement school's decision to end the placement. Under such circumstances, the student will return to Hillcrest and an alternative passport placement may be investigated by the Oaks Behaviour Co-ordinator. Additionally, Hillcrest School may deem it appropriate to issue the student with a fixed term exclusion for their behaviour at the placement school.

At the end of the six-week placement the student will return to Hillcrest, with the Deputy Headteacher (Pastoral) leading a reintegration meeting as part of the process. The placement school will complete an 'End of placement report' to highlight any strengths and positives that can be taken from the placement, along with any behavioural, attendance and punctuality concerns, during the placement. This will be used as the basis for the Deputy Headteacher (Pastoral) to complete the reintegration meeting when the student returns to Hillcrest.

Other schools in the Oaks Collegiate will refer students to the Sharing Panel and they will complete Passport placements at Hillcrest. It is our responsibility to ensure that all aspects of the Passport programme (as outlined above) are adhered to by staff at Hillcrest.

### **Managed Move**

Students who continue to experience behavioural issues, despite previous behavioural interventions, may be referred to the Sharing Panel to arrange a **Managed Move** placement at another school in the OAKS Collegiate. (see appendix 4)

This placement will be on a temporary basis, 6-12 weeks initially, with the view of the placement being made permanent if the student behaves and performs well during this time. They would, however, still officially remain on roll at Hillcrest until a decision was reached with the placement school to officially place the student on their roll.

Managed Moves will be considered under the following circumstances:

- A student has persistently failed to follow the school's behaviour policy despite the tiered intervention / support outlined in the school behaviour policy (see appendix 5);
- A student attended another school on a passport placement but their behaviour has not improved since returning to Hillcrest;
- A student is involved in a serious breach of the school rules and their actions have put the safety of staff and other students at risk;
- A student has received multiple fixed period internal and external exclusions; and/or
- A student who is at risk of permanent exclusion.

As part of the process, our Deputy Headteacher (Pastoral) and the OAKS Behaviour Co-ordinator will meet with the student and parent / carer to discuss the reasons for and benefits of the managed move and secure consent from the parent / carer. The Deputy Headteacher (Pastoral) will then attend a Sharing Panel meeting where a decision will be made on the most appropriate placement school. Various factors will be considered when agreeing the most appropriate placement school:

- Distance from the family home;
- Level of behavioural support schools can provide based on needs of the student;
- Historic or current issues with students currently attending the proposed school; and
- Nature and extent of any safeguarding issues and support required.

The OAKS Behaviour Co-ordinator will lead an initial induction meeting at the placement school and targets will be agreed, using the 'Sharing Panel Mentoring Form' and 'Managed Move Contract', for the student to

achieve during the first phase of the placement, as well as outlining the support that will be provided by the placement school. During this meeting relevant behavioural, learning and safeguarding information will be shared by the Deputy Headteacher (Pastoral). The OAKS Behaviour Co-ordinator will ensure that school uniform is provided for the student as part of the managed move process.

The placement school will invite parents/carers, the Deputy Headteacher (Pastoral) and the Oaks Behaviour Co-ordinator to a review meeting after the initial 6-8 week period. During this meeting the placement will be reviewed, with the possible outcomes that the student will either be formally taken on roll by the placement school, the managed move will be extended for another 6-8 weeks and then reviewed again at the end of this period or the managed move will be terminated. The placement school does have the right to extend the managed move indefinitely until they are satisfied the student has achieved the attendance and behavioural targets agreed in the Mentoring Form and Managed Move Contract.

The placement school will complete a weekly review, using red, amber and green traffic lights, which will be shared with the Deputy Headteacher (Pastoral) at Hillcrest. If the review is highlighted as amber the placement school will organise an internal review meeting with the student, parent/carer and Deputy Headteacher (Pastoral). If the review is highlighted as red, the placement school will organise an emergency managed move review meeting, chaired by the Oaks Behaviour Co-ordinator, during which a decision will be made on whether the placement will continue. If it is agreed that the placement will continue, a new set of targets will be formally agreed and monitored closely by staff at the placement school.

The placement school does have the right to terminate the managed move at any stage, for the reasons outlined below (please note this is not an exhaustive list). Examples include:

- Student fails to attend the placement school regularly;
- Student is persistently late for the placement school each day;
- Student persistently fails to follow the school rules and meet behavioural expectations;
- Student brings a banned substance or illegal object on to the school premise;
- Student is verbally abusive and/or physical aggressive towards another student or a member of staff;
- Student damages school property;
- Student is involved in a 'one off' serious breach of the school's behaviour policy.

Under these circumstances, the Headteacher at the placement school will contact the Headteacher at Hillcrest, who will then notify the parents/carers of the placement school's decision to end the managed move. At this stage the placement school will complete an 'End of Placement Report' to highlight any strengths and positives that can be taken from the placement, along with any behavioural, attendance and punctuality concerns, that led to the decision to terminate the placement

When the decision has been made to terminate the managed move, the Headteacher at Hillcrest and OAKS Behaviour Co-ordinator will meet with the student and parents / carers to investigate other possible managed move placements either in the OAKS Collegiate or cross city, or other forms of alternative provision. The student will not necessarily return to Hillcrest during this time and it is the responsibility of the OAKS Behaviour Co-ordinator to make alternative provision between managed move placements. If it is deemed appropriate for the student to return to Hillcrest, the student and parent/carer will be expected to sign a 'Behaviour Contract' and attend regular review meetings as required. Additionally, Hillcrest School may deem it appropriate to issue the student with a fixed term exclusion for their behaviour at the placement school.

Other schools in the Oaks Collegiate will refer students to the Sharing Panel and they will complete Managed Move placements at Hillcrest. It is our responsibility to ensure that all aspects of the Managed Move programme (as outlined above) are adhered to by staff at Hillcrest.

### **Section 13 - Governors Behaviour Panel**

Parents / carers will be invited into school to meet members of the Governing Body to discuss on-going concerns about their child's behaviour in either in school, online or in the community. As part of this process parents / carers may be required to agree a 'Parent Contract' as part of their commitment to work with the

school to support their child and their conduct at school. Parents/carers may be required to attend a Governors Behaviour Panel meeting under the following circumstances:

- Student fails to attend five SLT detentions in an academic year
- Student receives 3 Fixed Term Exclusions in an academic year
- Student receives more than 6 x C3 consequences in an academic year

## **Section 14 – Fixed Term Exclusions**

The Headteacher and Deputy Headteacher are responsible for authorising exclusion paperwork. It is the College Learning Leader's responsibility to complete the exclusion paperwork and ensure that appropriate witness statements are supplied to support the content of the exclusion paperwork. Students will either receive an internal exclusion (Centre) or an external exclusion (at home) for a fixed period of time. The decision on the length of the exclusion will be made by the Deputy Headteacher (Pastoral) based on the nature and seriousness of the incident (see appendix 4). However, the number and length of previous exclusions may be used to consider the length of the exclusion issued by the Headteacher.

There is no definitive list of circumstances that may result in a fixed term exclusion from school. However, acts of physical aggression towards other members of the school community (students and staff), using racist language or undertaking racially motivated actions, behaviour in the community that brings the school into disrepute, smoking on the school site and posting images of a member of the school community on line without their consent will result in a fixed term exclusion from school. The school reserves the right to consider a fixed term exclusion from school for any behaviour that falls below expectations outlined in our 'Getting It Right' policy, including behaviour online and in the community. (see appendix 4)

After the exclusion has been agreed by the Headteacher, parents / carers will be contacted by telephone to explain the length of and reasons for the exclusion. This will be supported by a letter sent home to parents / carers clearly outlining the length of and reasons for the detention. The school will provide work for the student to complete at home during the length of the exclusion.

The Hillcrest School will commit to securing an alternative form of education if a student is excluded for more than five consecutive days for the one incident. For example, the student may be required to attend another school to work in isolation for the remainder of the term of the exclusion.

The Designated Safeguarding Lead (DSL) will contact appropriate external agencies to notify them of a decision to exclude a child potentially at risk, i.e. – Social Care, Youth Offending, and Family Support Teams.

Parents / carers will be required to attend a reintegration meeting with the Deputy Headteacher before the student returns to school. If a parent / carer either fails to or refuses to attend the meeting, the school will either ask the parent / carer to keep the student at home or the student will remain in the Centre until the parent attends the meeting. During this meeting the student and parent/carer will be expected to agree the terms of a 'Behaviour Contract' to outline key expectations when the student returns to school. This contract will be reviewed regularly, and parents/carers will be required to attend review meetings as agreed in the initial contract.

Parents/carers will be required to attend a formal meeting with the Headteacher if a student is excluded from school twice in an academic year and 'Governors Behaviour Panel' meeting with the Chair of Governors if a student is excluded from school three times in an academic year.

As outlined in the DFE 'Mental Health and behaviour in schools' (November 2018), when considering excluding a student, we will always consider any contributing factors that are identified, which could include where the student has mental health problems. Where appropriate, we will consider if action can be taken to address underlying causes of disruptive behaviour before issuing and exclusion. This is particularly important when assessing the impact of the Covid-19 period on a student's mental health, emotional well-being and behaviour. However, in all cases, we will attempt to balance the interests of the student against the mental and physical health of the whole school community. This policy should be read in conjunction with our 'Positive Mental Health' policy.

## **Section 15 - Permanent Exclusion**

The school will permanently exclude a student from school for a serious breach of the school's behaviour policy. Examples can be found on page 33 of this policy. However, the list of examples is not exhaustive. In addition, a student may be permanently excluded from school for a cumulative number of fixed term exclusions issued as a result of their behaviour in school, online and in the community.

The Hillcrest School will endeavour to put support strategies in place to ensure that a student is not in danger of being permanently excluded. Any decision to permanently exclude a student will be taken to the Governors for formal approval. The school will follow guidance from the Local Authority in all cases of Permanent Exclusion.

### **Permanent Exclusion (PEX) Pilot programme**

As a member of the Oaks Collegiate, we work closely with our partner schools to minimise the risk of students being permanently excluded from school for a 'one-off' incident where the behaviour displayed is 'out of character' for the student in question.

The PEX pilot programme gives a student the opportunity to move to another OAKS Collegiate school on a 20-week trial basis. If the placement is successful over the 20-week period, the student will be taken on roll at the placement school and avoid being permanently excluded by their home school. If, however, the placement is terminated at any stage of the 20-week trial by the placement school, the home school will continue with the permanent exclusion.

The process for PEX Pilot placements follow the same process for managed moves (see pages 15-16) in terms of organising, reviewing and terminating the placement.

The school will follow all safeguarding guidance to monitor and ensure the safety of students at alternative provision sites, in line with procedures outlined in our Child Protection and Safeguarding policy.

## **Section 16 – The Centre (Isolation Room)**

Students may be required to spend a period of time in the Centre for several reasons, including:

- They have received a C3 for behaviour in lessons or around the school at break / lunchtimes;
- They have been asked to write a statement about an incident that has taken place in school or the community, pending further investigation;
- They have been internally excluded for a specific reason;
- They have been internally isolated for a specific reason (ie – failing to attend a 60-minute SLT detention, failing to meet targets agreed on a Stage 3 SLT monitoring report, etc)
- Staff have unsuccessfully attempted to contact parents to collect their child from school for behavioural issues or a fixed term exclusion;
- Staff feel they need 'time out' to compose themselves as a result of a specific incident;
- They have failed to comply with school uniform expectations;
- They have failed to give their mobile phone to a member of staff if it was visible in school; and
- They have damaged school property.

As outlined in 'Positive Environments where children can flourish', March 2018 (Ofsted), we will endeavour to protect the rights and dignity of students at all times in the Centre. We recognise that some students may feel vulnerable and anxious if they feel they are locked in the Centre. Therefore, we will ensure that the door to the Centre is open while there are students in the room. However, as outlined in section 14, any member of staff on duty in the Centre has the right to physically restrain a student from leaving the room if they feel the student poses a risk to their own personal safety or the personal safety of the members of the school community. Staff on duty in the Centre have access to a telephone to ring a member of the Senior Leadership or Pastoral teams if they require assistance with the behaviour of any student in the Centre.

## **Section 17 - Physical Restraint**



In July 2013 the government published a revised version of 'Use of Reasonable Force'. It indicates that all members of school staff have a legal power to use reasonable force and the decision on whether or not to physically intervene is down to the professional judgement of the staff member concerned and should always depend on the individual circumstances. (Refer to 'Care and Control Policy' for further details)

The guidance is clear that any member of staff may use 'reasonable force' to physically restrain a student under the following circumstances:

- remove disruptive children from the classroom where they have refused to follow instructions leave the classroom;
- prevent a student behaving in a way that disrupts a school event, trip or a visit;
- prevent a student leaving the classroom where allowing the student to leave would risk their safety or lead to behaviour that disrupts the behaviour of others;
- prevent a student from attacking a member of staff or another pupil, or to stop a fight in the playground; and
- restrain a student at risk of harming themselves through physical outbursts.

As outlined in 'Positive Environments where children can flourish', March 2018 (Ofsted), protecting the pupil's rights and dignity will be taken into consideration by staff when determining the need for and level of physical intervention required.

In line with 'Keeping Children Safe in Education' (2021), as a school, we will consider the risk of using physical restraint or isolation for pupils with SEND given the additional vulnerability of pupils in this cohort. As part of our positive planning and proactive behaviour support, we aim to reduce the occurrence of risky behaviour and the need to use restraint.

## **Section 18 – Managing Incidents Off-Site**

It is our responsibility to ensure the safe, orderly departure of students from the school site and area immediately surrounding the school during the school day. On rare occasions there may be incidents that put students and staff at risk of harm and require communication and a co-ordinated response from police colleagues.

Staff may become aware through student feedback that an incident of crime or anti-social behaviour is being planned to take place at the start or end of the school day (i.e. – fights between students and/or members of the public). Before reporting a foreseeable incident to the police, the Deputy Headteacher (Pastoral) will:

- gather as much information as possible, including the names of those involved, locations and work to resolve the issue in school using our behaviour policy;
- risk assess the likelihood of the incident taking place;
- risk assess the potential level of harm to the people involved;
- consider any additional threats i.e. – ascertain if any of the students involved have gang affiliations;
- speak to those involved in an attempt to diffuse the situation;
- inform parents/carers of the potential risk;
- consider allowing students potentially involved to arrive late to school or leave early; and
- if the risk is high, consider decisions in conjunction with our 'Lockdown' policy.

If the Headteacher considers police involvement would be appropriate and proportionate, the school will contact the police to report the concern and request support. The Headteacher will escalate through the police command structure if expressed concerns are not actioned by the police.

Occasionally, incidents may occur outside school that are unforeseen or have escalated quickly. On these occasions, the school will contact the police immediately and request an emergency response.

A member of the Senior Leadership Team is on duty outside the school gates each morning and a minimum of two members of the Senior Leadership Team are on duty outside the school gates at the end of each day. During an incident, whether foreseen or unforeseen, any members of staff on duty and present at the time, have the authority and responsibility to use 'reasonable force' techniques and take necessary

actions to ensure the safety of students, other members of staff and the community involved in or witnessing the incident.

## **Section 19 - Support Systems for Staff**

All staff have a responsibility to promote and maintain positive behaviour in school. Guidance is provided for staff on strategies they can employ to promote positive behaviour and respond to misbehaviour. At times, staff may feel that they cannot cope with a particular problem, ie – on-going student behaviour issues linked to bereavement or trauma experienced as a result of Covid-19 disruption. At these times they will receive support, additional advice and supervision, as required.

Staff may seek support and advice from a variety of sources within the school, e.g. from a trusted friend or colleague. This 'low level' support is encouraged actively, because sharing a problem is a sign of confidence, not an admission of failure. Support will also be available from Learning Managers or College Leaders depending on the nature of the difficulty.

If a student has a Special Educational Need rather than additional needs, formal and informal support is also available via the school's SEN system. In this case a referral can be made to the school's SENCO. This may lead to the pupil and the member of staff benefiting from extra in-class support. The Deputy Headteacher (Pastoral) coordinates specialist support from external agencies that provide additional advice on managing of students' behaviour.

The school supports staff through continuing professional development, and the CPD Co-ordinator arranges training for departments, form tutors or individual members of staff looking to develop their behaviour management skills. Behaviour is monitored through;

- weekly analysis of department C2 and C3 data by Deputy Headteacher (Pastoral), College Learning Leader and Learning Manager
- analysis of 'Getting It Right' data each half term to identify trends and patterns in the behaviour of form groups, sub-groups and individual students
- updates and review of Individual Behaviour Plans
- discussions on behaviour at weekly year team briefings and pastoral meetings
- analysis of exclusions each half-term

## **Section 20 - Support Systems for Parents / Carers**

The Hillcrest School is keen to facilitate effective and on-going parent/carers support for all its policies and practices. Parents and carers who express concern to the Form Tutor or College Learning Leader about managing the behaviour and attendance of their child are offered support from a range of services coordinated by the Deputy Headteacher (Pastoral). In addition, we are always striving to increase the range of support we offer students and their families by working with services from the voluntary sector.

If school staff have concerns about a student's behaviour, parents and carers will be informed about these concerns at the earliest opportunity and invited to look, together with the school, for a solution to the problem. This process will always respect the opinions and situation of the family, student and the school.

Parents / carers will receive a letter if their child is placed on report by either their form tutor or College Learning Leader. The letter will clearly explain the length of the report period and the reasons why the student was placed on report. Parents / Carers will also receive a letter if their child receives a C3. This letter will clearly outline the reasons why the student was removed from lesson.

We will do our best to engage parents and carers who are hard to reach through a range of additional measures including, where appropriate, the Think Families scheme and Early Help process.

The school will make this policy available to parents and carers in a user-friendly and accessible format on the school website. Access to students' confidential records is available with reasonable notice. The school will provide opportunities for parents and carers to contribute to the school's policy and strategies for promoting positive behaviour and attendance. This will be through participation of the PTA (Friends of Hillcrest), communication through the website, the advice of Parent Governors, the involvement of

parents/carers in school support activities, cultural and social events and other activities that promote positive partnerships between the school and the wider community.

### **Section 21 - Monitoring**

Our Behaviour Policy and Procedures will be monitored and evaluated by:

- Governing body visits to the school and meetings with the Safeguarding team
- Annual Governors Safeguarding report
- Weekly safeguarding team meetings to review support for vulnerable students
- Feedback on behaviour issues at SLT meetings
- SLT 'drop ins' and discussions with children and staff
- Pupil survey and questionnaires
- Scrutiny of range of risk assessments
- Logs of bullying / racist / homophobic / peer-on-peer behaviour incidents

### **Section 21 – Review**

This policy will be reviewed annually by Steven Connor-Hemming (DHT Pastoral)


Policy updated: July 2021

Review Date: July 2022

## Appendices

### Appendix 1 – Getting It Right procedures

**Hillcrest School**  
A Specialist Maths & Computing College and Sixth Form Centre





---

## **Principles**

**Choice**  
Choices lead to Actions, actions lead to Consequences

**Praise**  
Get your point – Keep your point – Get it Right!



**Getting It Right**  
making the difference

**Hillcrest School**  
A Specialist Maths & Computing College and Sixth Form Centre




---



**Aim for a minimum of:  
95% GIR Points**

**Getting It Right**

**Hillcrest School**  
A Specialist Maths & Computing College and Sixth Form Centre



---

### **Getting It Right Winners Event**

Students must achieve a minimum of 95% GIR points across the year to earn a place at the GIR Winners event.

However, students will not be allowed to participate in the event under the following circumstances even if they achieve 95%:

- If you receive more than 2 C3s during the year
- If you are late to school more than 15 times during the year

**Late to School:**

Students must be in form room by 8.50am

Any student arriving after 8.50am = **30 minute detention that day (C2)**

Student fails to attend 30 minute detention = **40 minute SLT detention (Friday)**

| Number of<br>lates | Consequences   |
|--------------------|--|
| 5                  | Letter sent home to parents  |
| 10                 | Parents come into school to meet College Leader  |
| 15                 | Parents come into school to meet Deputy Headteacher / EWO – Student loses place on GIR rewards events at end of the year |
| 20                 | Parents come into school to meet Headteacher   |
| 25                 | Parents come into school to attend 'Governors Attendance Panel'  |
| 30                 | Parents come back into school to attend another 'Governors Attendance Panel' meeting                                     |



**Getting It Right Awards**

**Students will be awarded certificates to reflect the GIR achievements at the end of each term and overall at the end of the year. The certificates will be tiered to acknowledge the levels of achievement and engagement in lessons:**

**GIR GOLD certificate = student achieves >99-100% GIR points**

**GIR SILVER certificate = student achieves >97-99% GIR points**

**GIR BRONZE certificate = student achieves 95-97% GIR bonus points**



**GIR Bonus Points (Merits)**

**REWARDS**

Students can also earn **GIR Bonus Points** for outstanding effort, work, behaviour and attitude to learning in lessons and homework.



30 GIR Bonus Points are required for a **Bronze** Certificate

40 GIR Bonus Points for a **Silver** Certificate

50 GIR Bonus Points for a **Gold** Certificate

60 GIR Bonus Points for a **Platinum** Certificate

80 GIR Bonus Points for a **Diamond** Certificate

100 GIR Bonus Points for an **Emerald** Certificate



## Hillcrest Superstar

This is the highest level of reward we have at Hillcrest. A Hillcrest Superstar will be someone who at the end of the year –

- **Earns a minimum of 95% GIR points**
- **50 or more GIR Bonus Points**
- **6 Community Certificates**

Hillcrest Superstars will receive a special certificate and their names will be displayed on a Roll of Honour. They will also be awarded with a special Headteacher's tie – one which is a different design to the rest of the school's tie.



| Barriers to learning in the classroom  | WARNING       | C1             | C2                           | C3                                |
|--|---------------|----------------|------------------------------|-----------------------------------|
| Negative Attitude to learning 1 in lesson  | Name on Board |                |                              |                                   |
| Negative Attitude to learning 2 in lesson  | Name on Board | Lose GIR point |                              |                                   |
| Negative Attitude to learning 3 in lesson  | Name on Board | Lose GIR point | 30 minute detention that day |                                   |
| Negative Attitude to learning 4 in lesson  | Name on Board | Lose GIR point |                              | Rm 35 / 60 min detention that day |
| <b>Examples of negative attitudes to learning that warrant a warning and C1 consequence:</b> <ul style="list-style-type: none"> <li>• Talking while teacher and/or other students are speaking</li> <li>• Talking while class have been asked to work silently / quietly</li> <li>• Not listening or paying attention while the teacher and/or other students are talking</li> <li>• Lack of effort and failure to complete satisfactory amount of work in lesson</li> <li>• Deliberately distracting other students</li> <li>• Failure to wear face mask appropriately</li> <li>• Chewing or eating in lesson / drinking in an IT room</li> <li>• Failure to have the correct equipment - pen, pencil, ruler/knowledge organiser/exercise book/materials/ PE kit</li> <li>• Uniform, ie – no tie / worn inappropriately, incorrect footwear, shirt untucked, etc</li> <li>• <b>Arrive five minutes late to lesson without valid reason (automatic C1 – no warning)</b></li> </ul> |               |                |                              |                                   |

## Consequence and Actions

Every time a consequence is issued by a teacher it will be followed up with an ACTION.

|   |   |  |
|---|---|--|
| <b>Consequence</b><br>Student receives a C1 for taking when she should be listening | → | <b>Action</b><br>Teacher may have quiet word with the student at front of the room         |
| <b>Consequence</b><br>Student receives a C2 for continuing to talk                  | → | <b>Action</b><br>Teacher may move student to another table                                 |
| <b>Consequence</b><br>Student receives a C3 for shouting out across the room        | → | <b>Action</b><br>Teacher may instruct student to stand outside room for 1-2-1 conversation |

## Issuing a C2 (30 minute detention that day)

| Barriers to learning in the classroom  | Warning | C1 | C2 |
|--|---------|----|----|
| Late to school (arriving after 8.50am)   |         |    |    |
| Speaking inappropriately to and/or questioning instructions from teacher, ie – refusal to move seat, questioning consequences issued, refusal to do work, refusal to stop talking, questioning face masks, saying 'no' to teacher. |         |    |    |
| Preventing the teacher from delivering the lesson, ie – persistent shouting out, persistent talking, excessive laughing, persistently distracting other students, throwing object around the room                                  |         |    |    |
| Shouting inappropriately and unnecessarily across the classroom to another student   |         |    |    |
| Continuous lack of effort and failure to complete classwork to the expected standard (over a number of lessons)  |         |    |    |
| Looking at and downloading inappropriate material from internet in an IT based lesson  |         |    |    |
| Continuous poor organisation – regular failure to bring correct equipment, exercise book, textbooks, knowledge organisers to lessons (over a number of lessons)  |         |    |    |

**Staff to issue C3 if student continues with any of the above forms of behaviour after receiving a C2**

## Issuing a C3 (Sent to Room 35 & 60 minute detention that day)

| Barriers to learning in the classroom   | Warning | C1 | C2 | C3 |
|---|---------|----|----|----|
| Mobile is visible in lesson/around school or student rings member of family during the school day (record C3 on progress but do not send to Room 35 if student hands over mobile phone)<br>Refusal to hand over mobile phone or other inappropriate items to teacher, ie – jewellery, headphones (Issue C3 and send to Room 35) |         |    |    |    |
| Using inappropriate language or being verbally abusive towards a member of staff or another student, ie – student attempts to change consequence on board, swearing, verbal threats of physical violence, using derogatory language (racist or homophobic comments) or inappropriate comments about another person.             |         |    |    |    |
| Physically aggressive towards a member of staff / another student, ie – student involved in fight with another student  |         |    |    |    |
| Damaging school property or the personal property of staff / another student, ie- graffiti on tables, ripping pages out of textbooks  |         |    |    |    |
| Displaying behaviour that is deemed to be dangerous to their own personal safety and other members of the class.  |         |    |    |    |
| Sending inappropriate comments to another student via the internet  |         |    |    |    |

## Hillcrest School

A Specialist Maths & Computing College and Sixth Form Centre



## C2 - Behaviour out of lessons (30 minutes detention that day)

There are no warnings for misbehaviour around school – C2 detention is given for..

- Running or making inappropriate noise in school  
(if a student continues to run and fails to stop / refuses to give their name a C3 must be issued)
- Taking food out of the canteen and eating food / drinking in the corridors
- Walking around the school in big groups of students (ie- 10 or more)
- Failure to wear facemask/appropriately
- Standing in big groups in student entrance and preventing others entering
- Dropping litter in the corridors or on the school fields
- Walking round school with headphones in and visible
- Walking on school field at end of the day rather than using designated footpath
- Being in the wrong form rooms at break and lunchtime
- Being in the wrong toilet (not including lesson times)
- Pushing in the dinner queue
- Failure to tidy up their food / tray / plates in the canteen\*

\*The Canteen reserve the right to refuse to serve any member of the school community



### C3 – Behaviour out of lessons (60 minute detention that day)

- If a student uses **inappropriate language** towards another student or member of staff
- If a student displays **aggressive behaviour** towards another student or member of staff
- If a student **refuses to follow any instructions**, ie – refuses to move away from student entrance, refuses to disperse from any bigger groups walking around school, refuses to leave if they are in the wrong form room, refuses to line up in correct area, refuses to wash hands, goes to unauthorised areas during the school day, refusal to wear facemask despite being asked to do so by member of staff, mixing bubbles, etc
- If a student displays **dangerous behaviour** around school (ie – throwing water inside the building, damaging school property, running in the corridor and refuses to stop)
- If a student has mobile phone visible (C3) and/or refuses to hand over a mobile phone around the school (C3 and sent to room 35 if refuses to hand over phone)
- If a member of staff observes a student smoking / drinking alcohol or stood with a student who is smoking / drinking (this will result in an exclusion)
- If a student is found in the **wrong toilets** during lessons, breaktimes, lunchtimes or at the start/end of the school day.

### C3 Interventions

| No. of C3 | Consequences/Interventions  |
|-----------|---|
| 1         | Sent to Room 35 and 60 minute SLT detention – letter sent home to parents<br><b>College Leader rings parents to discuss behaviour</b>                                   |
| 2         | Sent to Room 35 and 60 minute SLT detention – letter sent home to parents<br><b>College Leader (CLL) meets with parents to discuss behaviour</b>                        |
| 3         | Sent to Room 35 and 60 minute SLT detention – letter sent home to parents<br><b>CLL meets with parents to agree 'Behaviour Support Plan' (Review every 4-6 weeks)</b>   |
| 4         | Sent to Room 35 and 60 minute SLT detention – letter sent home to parents<br><b>One day internal isolation and CLL meets parents to set new targets on Support Plan</b> |
| 5         | Sent to Room 35 and 60 minute SLT detention – letter sent home to parents<br><b>One day internal exclusion and DHT / CLL meet with parents to update Support Plan</b>   |
| 6         | Sent to Room 35 and 60 minute SLT detention – letter sent home to parents<br><b>Two day internal exclusion and DHT/CLL meet with parents to update Support Plan</b>     |
| 7         | Sent to Room 35 and 60 minute SLT detention – letter sent home to parents<br><b>One day external exclusion and Headteacher/ Deputy Headteacher meet with parents</b>    |
| 8         | Sent to Room 35 and 60 minute SLT detention – letter sent home to parents<br><b>Two day external exclusion and referral to Governors Behaviour Panel</b>                |
| 9         | Sent to Room 35 and 60 minute SLT detention – letter sent home to parents<br><b>Managed move or passport placement arranged at another Oaks School</b>                  |



## Supporting the learning environment: Inappropriate items / objects

The Education and Inspections act (2006) gives schools the right to search students who it is believed have items which are banned from the school premises. Examples may include weapons or drugs.

**If it is believed that a student has any such item the following process will take place:**

1. The student will be informed that a search will take place.
2. Any search will be conducted by a Senior member of Staff and a witness.
3. Parents / Carers will be informed and if necessary the Police
4. If a student refuses to cooperate then both Parents / Carers and the Police will be called immediately to the school premises



### Exclusion

| Circumstances that will result in an exclusion   | C3 | EXC |
|--|----|-----|
| Any form of physical violence or fighting in school or out of school while wearing the school uniform (even if you are provoked into fighting)   | →  |     |
| Inciting other students to become involved in a fight  | →  |     |
| Verbal abuse and/or physical aggression towards a member of staff  | →  | PEX |
| Making racist or homophobic comments about a member of the school community or inciting hatred towards individuals / groups in written form, verbally or on-line (in school and out of school)                 | →  | PEX |
| Inappropriate use of social media in or out of school, ie – posting images without permission, any form of cyber-bullying or inappropriate comments about the school, members of staff, another student/family | →  |     |
| Smoking or drinking alcohol on the school site or being with other students caught smoking / drinking on the school site   | →  |     |
| Behaving inappropriately in the community and bringing the school into disrepute, ie – swearing at the school gates, stealing from shops, disruption on public transport                                       | →  |     |
| Theft or damage to school property, ie – breaking windows, graffiti in toilets, flooding toilets, deliberate damage to equipment   | →  |     |
| Bringing drugs on to the school site – under the influence of, possession, use and dealing   | →  | PEX |
| Bringing object on to the school site that may be deemed as a weapon, ie – gun, knife, blade, sharpened glass  | →  | PEX |

### Procedures for Mobile Phones (1)

**Choice:** Student uses mobile phone to contact parents/family or mobile phone is visible at **any** time of the day on the school site, ie - in lesson, form period or around school (before, during & at the end of the school day). Mobile phone must be switched off and put away before the student enters the school gate and must remain in this position until the student leaves the school premises at the end of the day.

**Action:** Student goes with member of staff to hand phone into main reception = student is given C3 (60 min. detention) but not sent to room 35

Mobile phone is kept safe in main reception, CLL contacts parents and asks parents to collect mobile from school

If happens **twice**, C3 (60 min. SLT DT), CLL meets parents and phone is kept in school until parents collect

If happens **three times**, C3 (60 min. SLT DT), phone is kept in school until parents to collect and meet with Deputy Headteacher

If happens **four times**, C3 (60 min. SLT DT), phone is kept in school until parents collect and meet with Headteacher

## Procedures for Mobile Phones (2)

**Choice:** Student uses mobile phone to contact parents/family or mobile phone is visible at **any** time of the day on the school site, ie - in lesson, form period or around school (before, during & at the end of the school day). Mobile phone must be switched off and put away before the student enters the school gate and must remain in this position until the student leaves the school premises at the end of the day.

**Action:** Student **refusal** to hand over phone = C3 (60 min. DT) and sent to room 35

Mobile phone is taken to main reception, parents contacted, phone is kept in school until parent meets with Deputy Headteacher. Student will be issued with one day internal isolation.

If happens **twice**, C3 (60 min. SLT DT), the student will be issued with a two day internal exclusion and parents required to meet Deputy Headteacher

If happens **three times**, C3 (60 min. SLT DT), the student will be issued with a one day fixed term exclusion and parents required to meet Headteacher / DHT

### Detention Systems (all detentions after school)

Student receives a C2 for lates or behaviour in or out of lessons

30 minute detention that day.  
Parents sent text

Failure to attend = 40 minutes SLT detention on Friday

Failure to attend = half day internal isolation / detention reissued

Student receives a C3 for behaviour in or out of lessons

60 minute detention that day.  
Parents sent text

Failure to attend = 70 minutes SLT detention on Friday

Failure to attend = full day internal isolation / detention reissued

### Extended Learning

Student receives a H1 or H2 consequence = 30 minutes detention.  
FTA = 60 minutes

H3 consequence = 60 minute detentions.  
FTA = 60 minute SLT

H4 consequences onwards = 60 minute SLT detentions

Failure to attend SLT:  
H4 – 0.5 day isolation  
H5+ – 1 day isolation

H6+ consequences = will result in internal isolation / exclusions for persistent failure to meet expectations

## Appendix 2 - Getting It Right Overview 2021-22

### Cumulative Consequences C1- C3

| Barriers to learning in the classroom     | WARNING       | C1             | C2                           | C3  |
|---|---------------|----------------|------------------------------|---|
| Negative Attitude to learning 1 in lesson | Name on Board |                |                              |   |
| Negative Attitude to learning 2 in lesson | Name on Board | Lose GIR point |                              |   |
| Negative Attitude to learning 3 in lesson | Name on Board | Lose GIR point | 30 minute detention That day |   |
| Negative Attitude to learning 4 in lesson | Name on Board | Lose GIR point |                              | Sent to Rm 35 / 60 min detention that day |

#### Examples of negative attitude to learning that warrants a warning and consequence:

- Talking while teacher and/or other students are speaking
- Talking while class have been asked to work silently / quietly
- Not listening or paying attention while the teacher and/or other students are talking
- Lack of effort and failure to complete satisfactory amount of work in lesson
- Deliberately distracting other students
- Failure to wear facemask / appropriately (as required)
- Chewing or eating in lesson / drinking in an IT room
- Failure to have the correct equipment - pen, pencil, ruler/knowledge organiser/exercise book/materials/ PE kit
- Uniform, ie – no tie / worn inappropriately, incorrect footwear, shirt untucked, wearing outdoor coat.
- Five minutes late to lesson without valid reason (no warning – automatic C1)

#### Issuing a direct C2 consequence (30-minute detention that day)

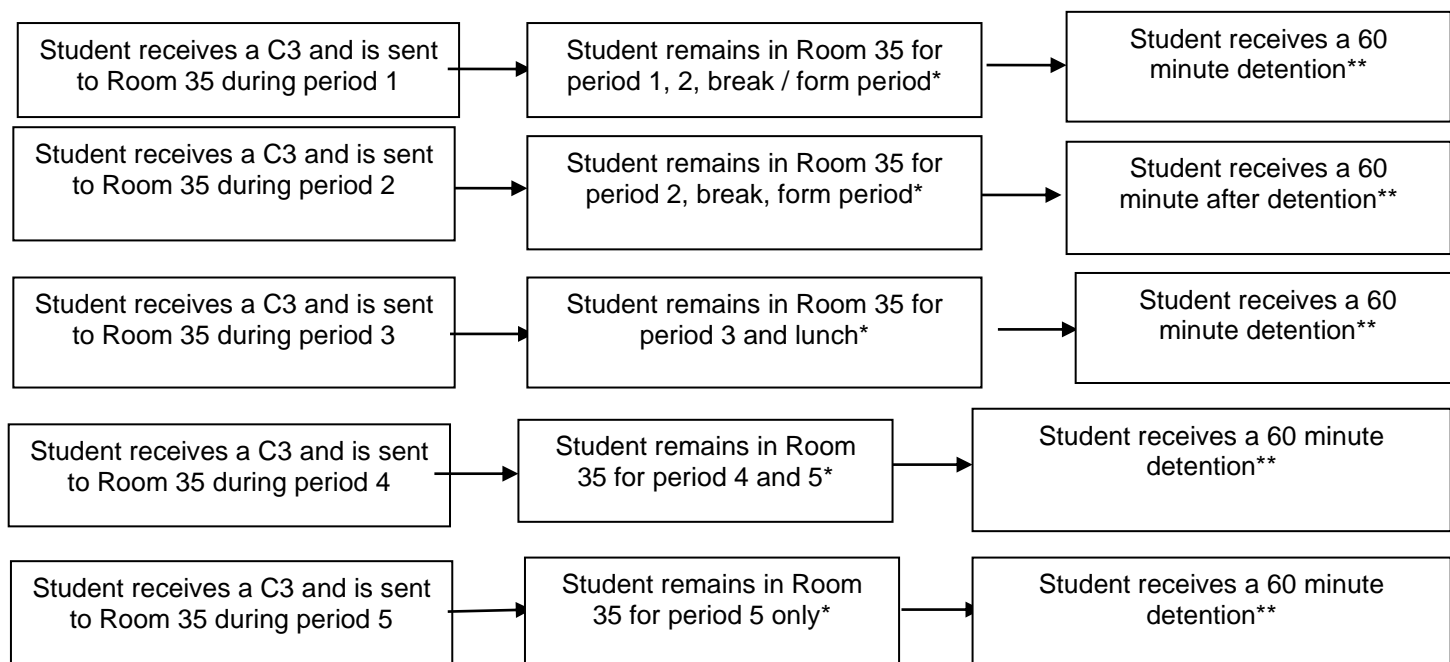
| Barriers to learning in the classroom  | Warning | C1 | C2 |
|--|---------|----|----|
| Speaking inappropriately to and/or questioning instructions from teacher, ie – refusal to move seat, questioning consequences issued, refusal to do work, refusal to stop talking, refusal to wear facemask/appropriately, saying 'no' to teacher. | _____   |    | →  |
| Preventing the teacher from delivering the lesson, ie – persistent shouting out, persistent talking, excessive laughing, persistently distracting other students, throwing object around the room  | _____   |    | →  |
| Shouting inappropriately across the classroom  | _____   |    | →  |
| Continuous lack of effort and failure to complete classwork to the expected standard (over a number of lessons)  | _____   |    | →  |
| Looking at and downloading inappropriate material from internet  | _____   |    | →  |
| Continuous poor organisation – regular failure to bring correct equipment, exercise book, textbooks, knowledge organisers  | _____   |    | →  |

#### Issuing a direct C3 (Sent to OLC and 60-minute detention that day)

| Barriers to learning in the classroom  | Warning | C1 | C2 | C3 |
|--|---------|----|----|----|
| Mobile is visible in lesson/around school or student rings member of family during the school day ( <b>record C3 on progress</b> but do <b>not send to OLC if student hands over mobile phone</b> )<br>Refusal to hand over mobile phone or other inappropriate items to teacher, ie – jewellery, headphones ( <b>issue C3 and send to OLC</b> ) | _____   |    |    | →  |
| Using inappropriate language or being verbally abusive towards a member of staff or another student, ie – student attempts to change consequence on board, swearing, verbal threats of physical violence, using derogatory language (racist or homophobic comments) or inappropriate comments about another person.                              | _____   |    |    | →  |
| Physically aggressive towards a member of staff / another student, ie – student involved in fight with another student   | _____   |    |    | →  |
| Damaging school property or the personal property of staff / another student, ie- graffiti on tables, ripping pages out of textbooks   | _____   |    |    | →  |
| Displaying behaviour that is deemed to be dangerous to their own personal safety and other members of the class.   | _____   |    |    | →  |
| Sending inappropriate comments to another student via the internet   | _____   |    |    | →  |
| Truancy from school, lesson or form period   | _____   |    |    | →  |

### Appendix 3 – Guidance on C3 arrangements

Students may be sent to the Centre (Room 35) during the day as a result of their behaviour in lessons and around the school site. Students will remain in the centre for a fixed period of time, depending on the nature of the behavioural issue, and attend a detention at break and lunchtime on either that day or the following day. When staff send a student to the Centre they must send information, via email, immediately to the Centre and complete the appropriate referral through Progresso.



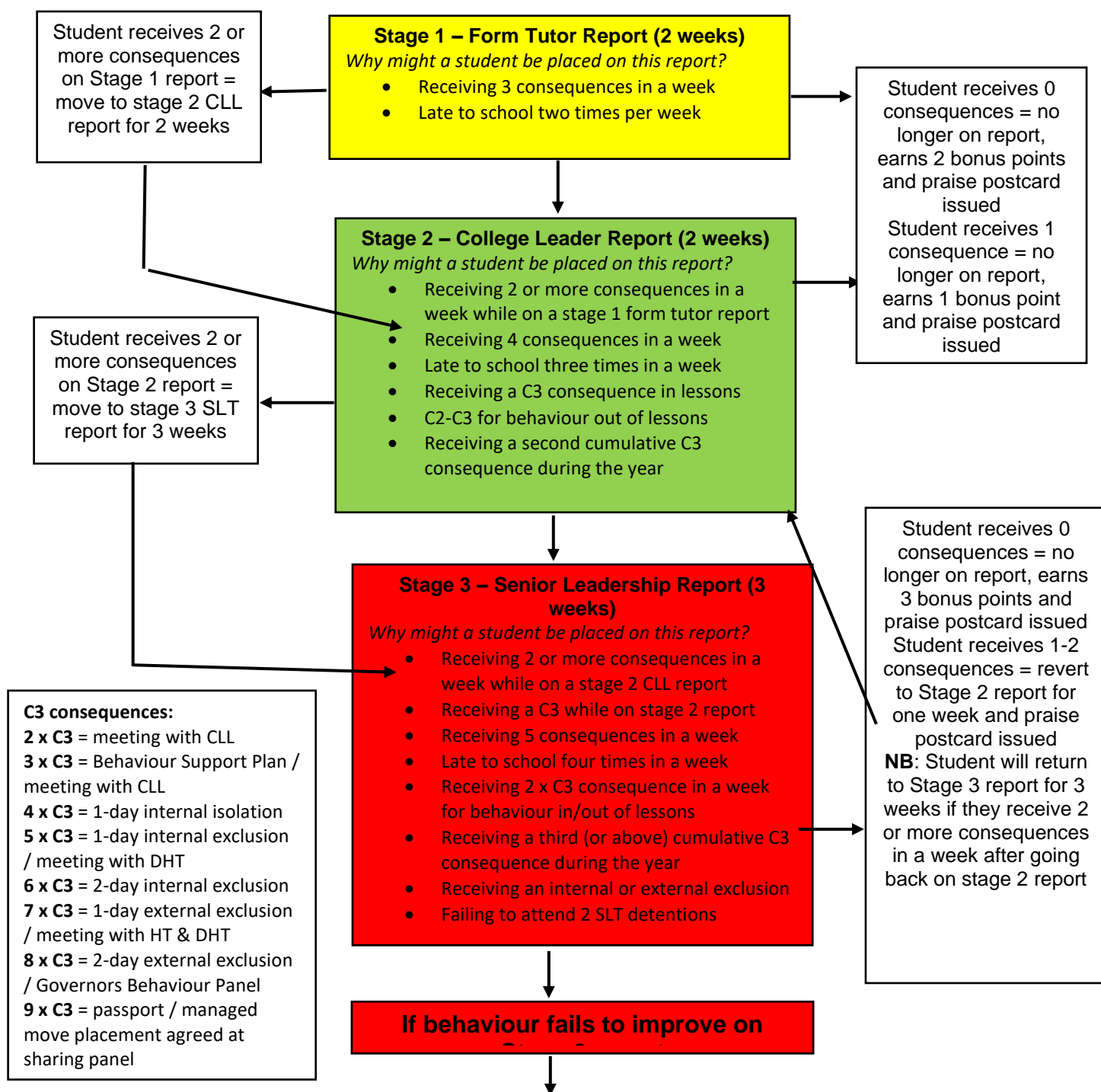
\*The member of staff in the Centre may decide it more appropriate for the student to remain in the Centre longer depending on the seriousness of the reason for the C3 referral (i.e. blatant refusal to follow instructions in lessons or behaviour that has potentially put the student / other students at risk) or their behaviour when in the Centre. College Learning Leaders may also decide it is more appropriate for a student to remain in the Centre longer (i.e. truancy from lessons, bullying of other students, refusal to co-operate with their instructions)

\*\* Failure to attend the SLT detention will result in students receiving a one day internal isolation.





## Appendix 4: Hillcrest School: Behaviour Stages 1-3



If a student on stage 3 report receives three consequences in a week, they will be internally isolated for half a day.

If a student receives a C3 or four consequences in a week, they will be internally isolated for a full day and parents will be invited into school to meet with the DHT. The student will remain on stage 3 report for a further two weeks monitoring.

If there is no improvement in behaviour (ie – C3 or three consequences in the additional monitoring weeks), the student will receive a one-day internal exclusion and parents will be invited back into school to meet the DHT to agree a 'Behaviour Support Plan'. Targets will be set for further four week monitoring period. If the type of behaviour outlined above continues, the student will receive a two-day internal exclusion and new targets will be set on the Support Plan for a further three week monitoring period.

If there is no improvement in behaviour, despite the actions and interventions outlined above, the student will receive a one-day external exclusion and parents will be invited to attend a meeting with the Headteacher and DHT.

If there is no improvement in behaviour, despite the actions and interventions outlined above, the student will receive another external exclusion (length determined by the nature and frequency of the behaviour issues) and will be placed at sharing panel for either a passport or managed move placement (nature of placement will be decided by Headteacher)